



# DESTINATION HOPE:

## Smithers & Montgomery

### Intergenerational Gateway Community

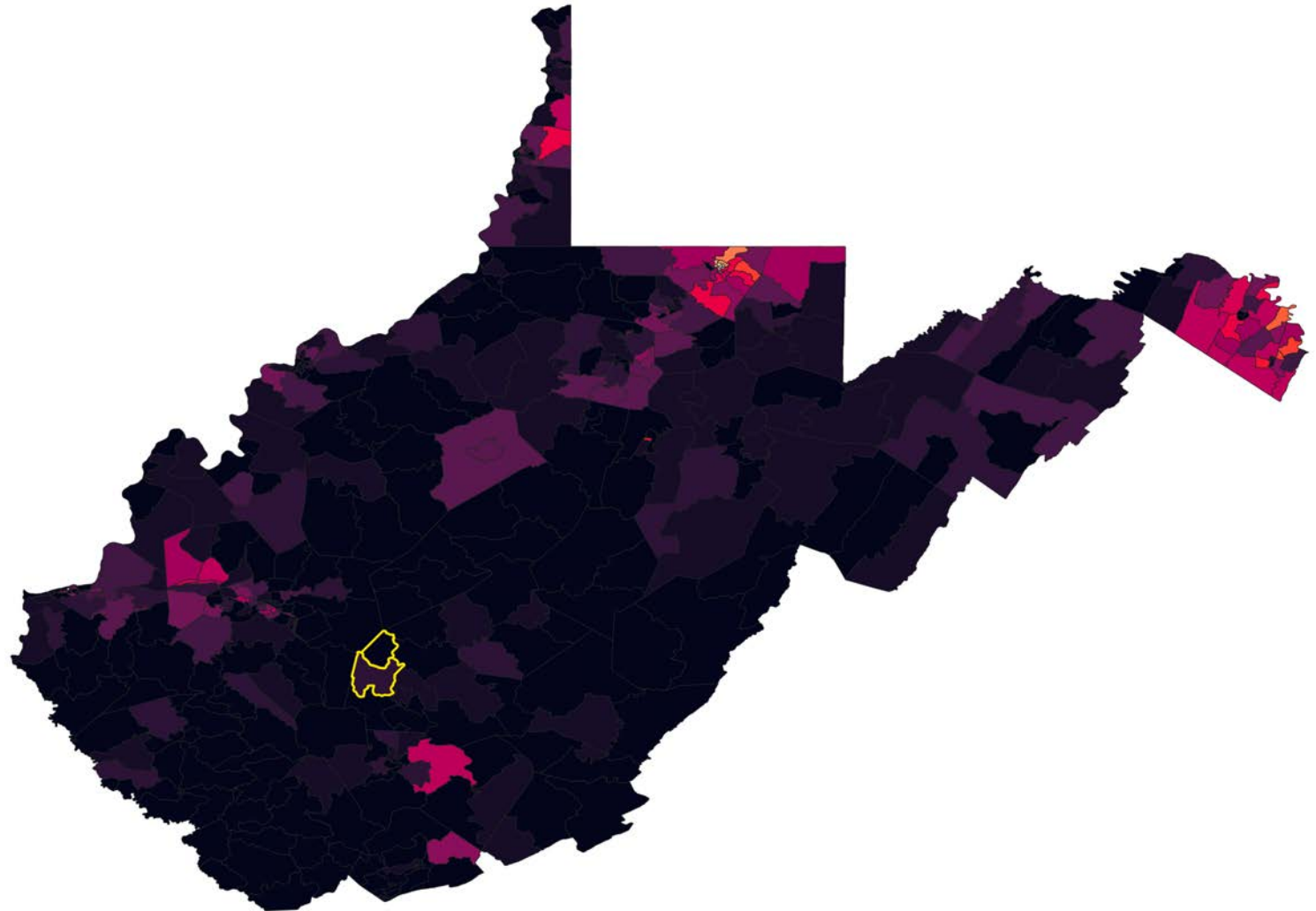
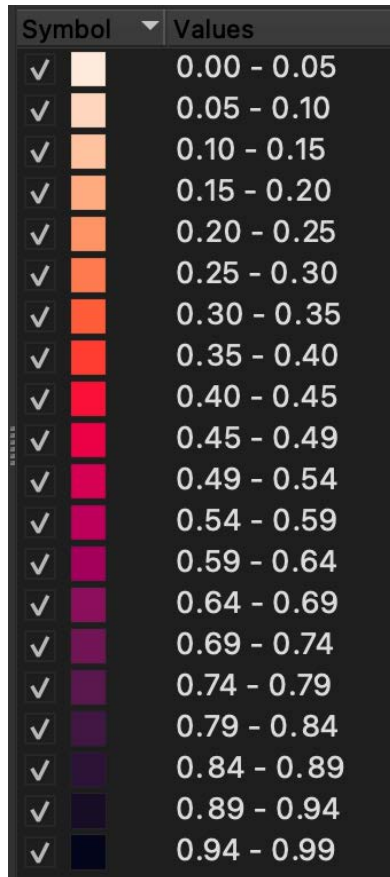
*Integrating Town Planning and Community Health to Address the Seven Vital Conditions of Community Health and Well-Being in Economically Challenged Appalachian Towns*

# THE DYNAMIS PROCESS



# JUSTICE 40 DATA

Coronary heart disease among adults aged greater than or equal to 18 years (percentile)



# THE SEVEN VITAL CONDITIONS FOR COMMUNITY HEALTH & WELLBEING



<https://www.communitycommons.org/collections/Seven-Vital-Conditions-for-Health-and-Well-Being>



# STRATEGIC PLANNING TO SUPPORT THE SEVEN VITAL CONDITIONS - A COMPREHENSIVE VIEW



This map shows the elements of the plan as they relate to the Seven Vital Conditions. Each condition and corresponding site is color-coded to indicate the type of condition that is being supported at that location. All previously referenced plan elements are included.



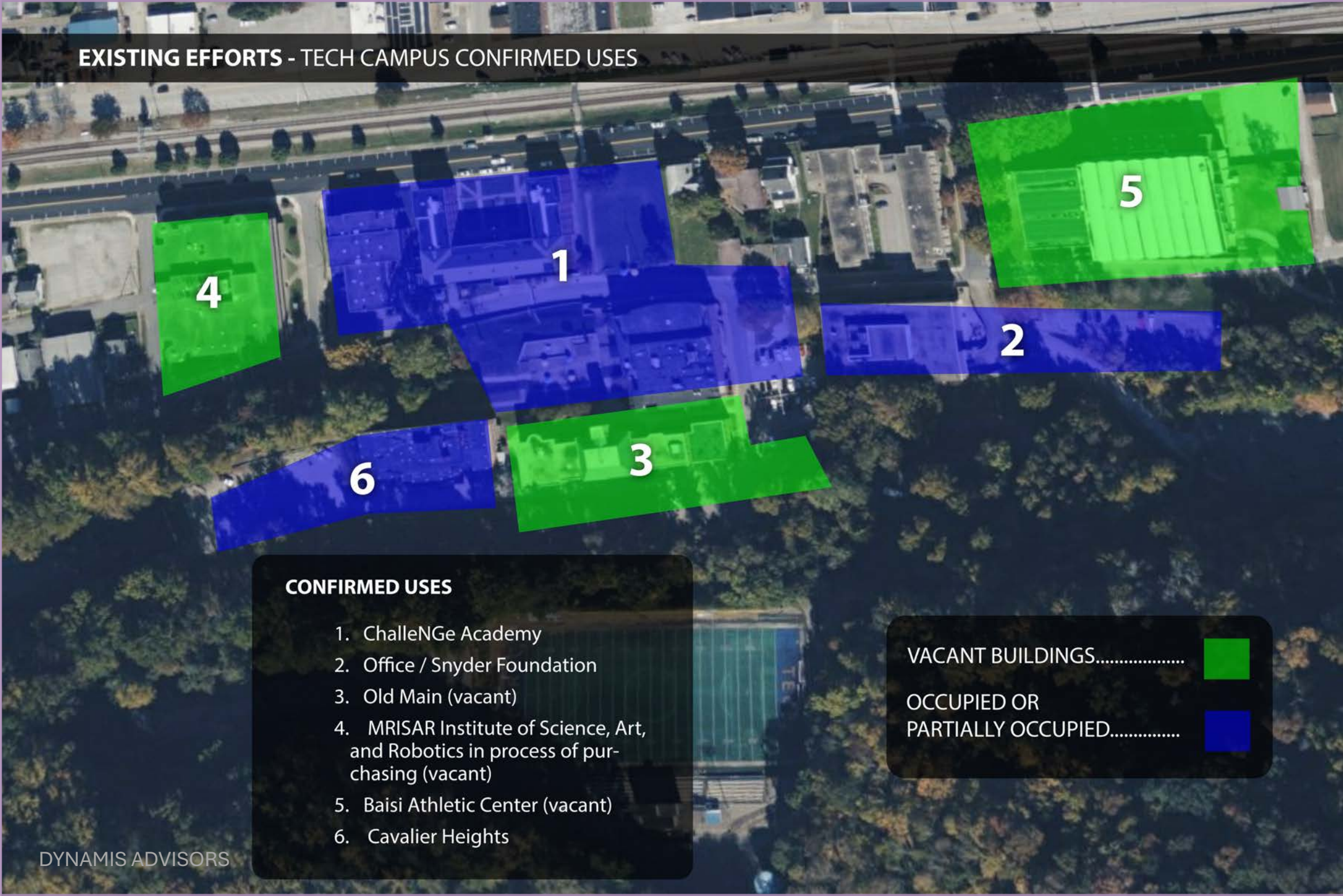
## EXISTING EFFORTS - SITE LOCATIONS

- EXISTING EFFORTS**
1. Existing & planned trails
  2. Confirmed Tech Campus use
  3. Montgomery General Hospital (MGH) improvements
  4. Gateway Center
  5. Montgomery Civic Center area
  6. Amtrak station
  7. Seed Sower Manor
  8. Longacre Property
  9. Grants Grocery
  10. Oakland River Park
  11. Rivermount Presbyterian Homes







# EXISTING EFFORTS - TECH CAMPUS CONFIRMED USES



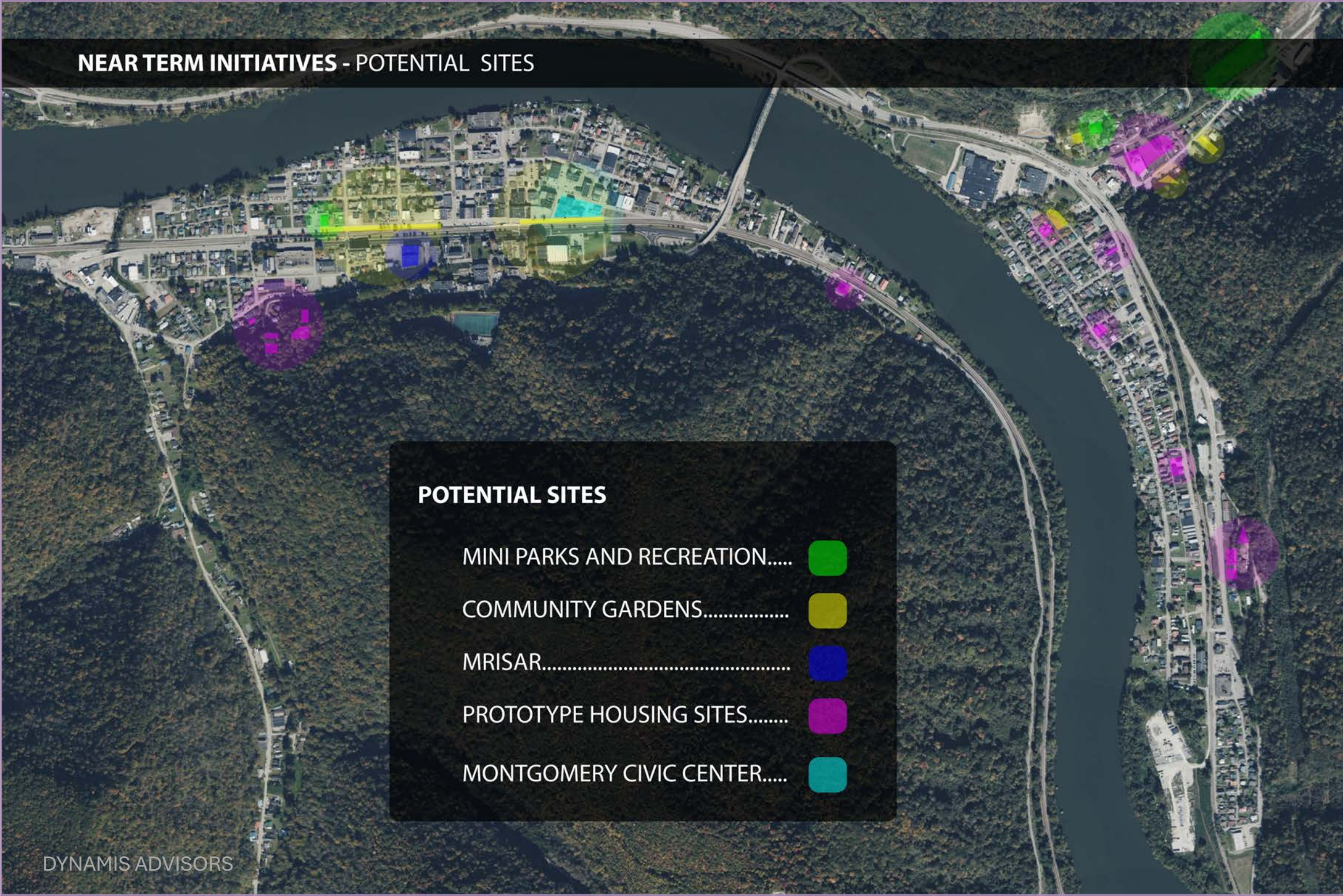
- CONFIRMED USES**
- 1. ChalleNGe Academy
  - 2. Office / Snyder Foundation
  - 3. Old Main (vacant)
  - 4. MRISAR Institute of Science, Art, and Robotics in process of purchasing (vacant)
  - 5. Baisi Athletic Center (vacant)
  - 6. Cavalier Heights

VACANT BUILDINGS..... 


OCCUPIED OR PARTIALLY OCCUPIED..... 



# NEAR TERM INITIATIVES - POTENTIAL SITES



## POTENTIAL SITES

MINI PARKS AND RECREATION..... 

COMMUNITY GARDENS..... 

MRISAR..... 

PROTOTYPE HOUSING SITES..... 

MONTGOMERY CIVIC CENTER..... 




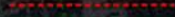






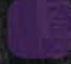
# NEAR TERM INITIATIVES - POSSIBLE TRAILS, ROUTES, AND CONNECTIONS



This map shows possible trail connections between the new town trails and the following entities: planned walking trails, river access parks, mini-parks and recreation areas, community gardens, and prototype housing sites.

The updated trails will feature new signage and are intended to link people with key locations throughout the town, as well as provide access to the town's oldest and most scenic feature, the river.

### POSSIBLE TRAILS, ROUTES, AND STOPS

- PLANNED WALKING TRAILS..... 
- NEW TOWN TRAILS..... 
- TRAIL CONNECTION POINTS..... 
- RIVER ACCESS PARKS..... 
- MINI PARKS AND RECREATION..... 
- COMMUNITY GARDENS..... 
- MRISAR..... 
- PROTOTYPE HOUSING SITES..... 
- MONTGOMERY CIVIC CENTER 



# MRISAR MUSEUM

# BUILDING RENDERING



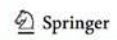


# NEAR TERM - POTENTIAL SITES FOR PROTOTYPE AGING IN PLACE HOME

This map shows the potential sites for the proposed prototypical Aging In Place home. This site would be home to a program that teaches students how to build these homes with the appropriate sensors and technology to support the modern Aging in Place home.



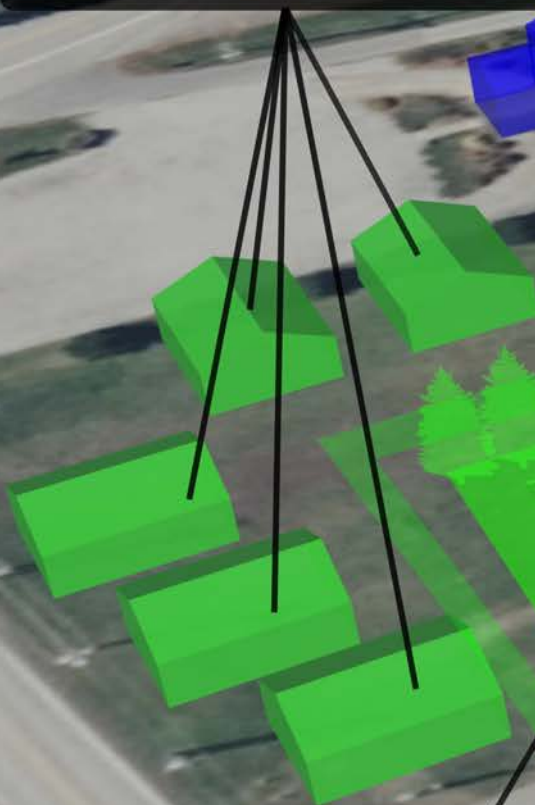
Fig. 2 The classification of smart technologies used in the home environment



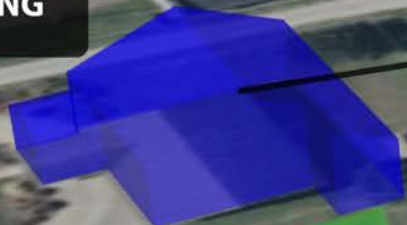


# POTENTIAL FOR DEMONSTRATION SUPPORTIVE NEIGHBORHOOD

## GROWING IN PLACE HOUSING



## HOME FOR COMMUNITY CENTER PROFESSIONALS



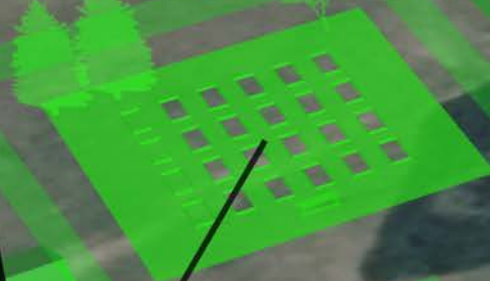
## COMMUNITY CENTER

- Access to healthcare
- Grandkid childcare
- Van hub
- Event programming
- Communal kitchen and healthy living classes
- Internet cafe / computer room

## PLAYGROUND / MINI PARK



## COMMUNITY GARDENS



## AGING-IN-PLACE PROTOTYPICAL HOMES

- Incorporates smart-home technology
  - Dr. Yenemula Reddy potential involvement
- Supported by sustainable energy resources
- Upgraded to modern standards of Aging In Place housing

NEW CONSTRUCTION

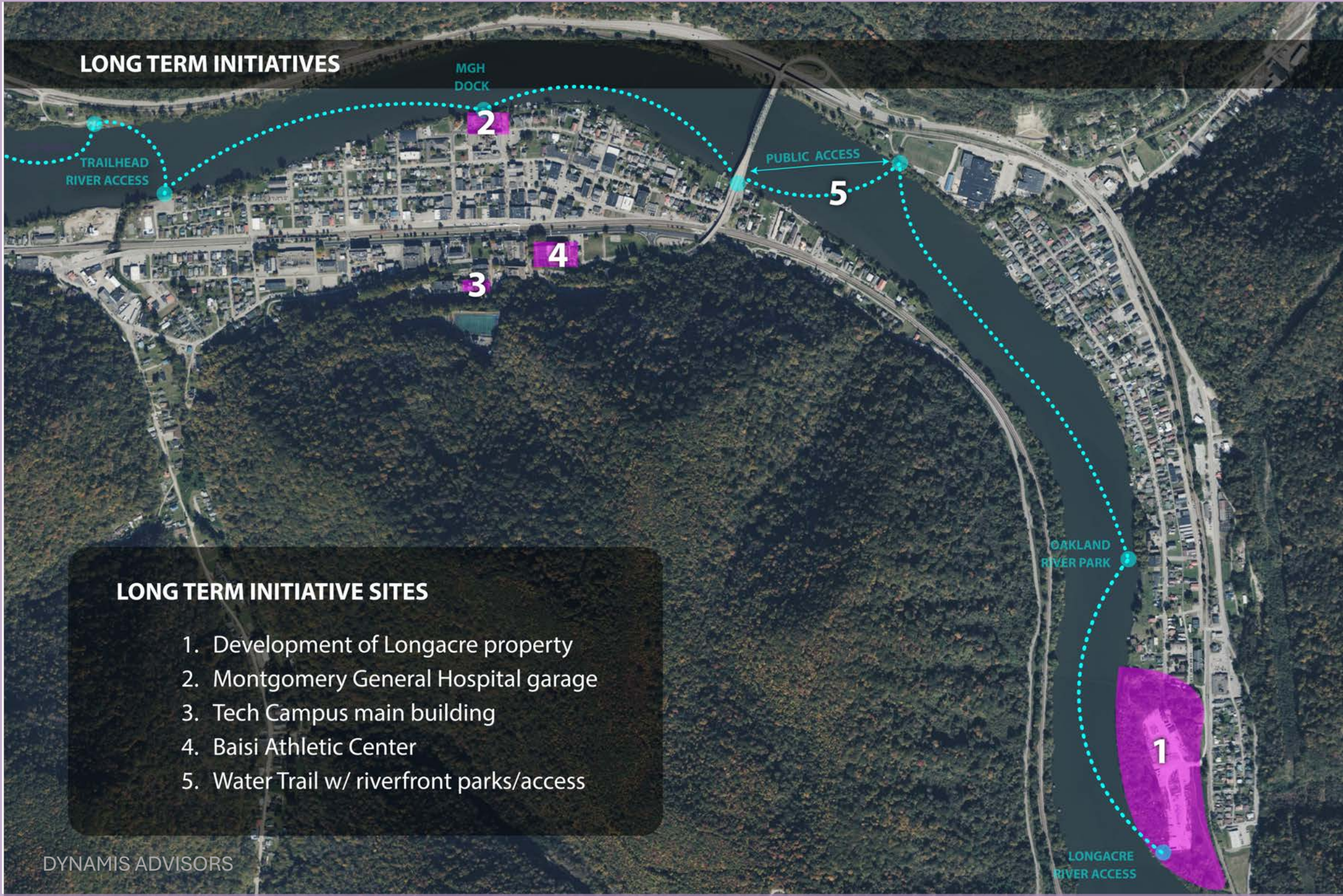


REMODELS





## LONG TERM INITIATIVES



## LONG TERM INITIATIVE SITES

1. Development of Longacre property
2. Montgomery General Hospital garage
3. Tech Campus main building
4. Baisi Athletic Center
5. Water Trail w/ riverfront parks/access



# LONG TERM INITIATIVES - MONTGOMERY GENERAL GARAGE IMPROVEMENTS



WATER TRAIL STOP

OUTDOOR DINING

COMMUNITY EVENT SPACE

MINI PARK / NATURE AREA



# LONGACRE

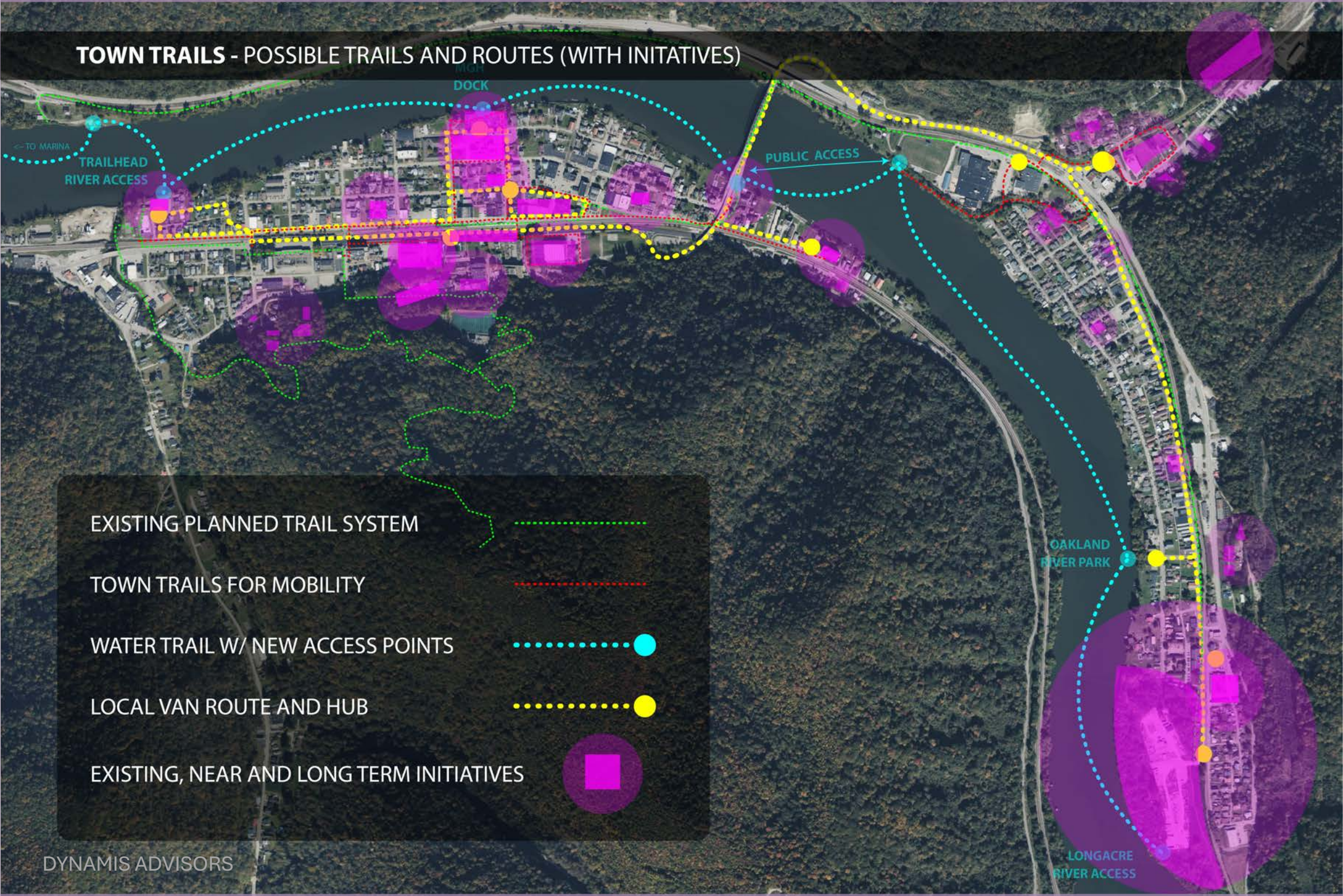
# AERIAL PERSPECTIVE



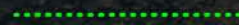
Aerial Perspective



# TOWN TRAILS - POSSIBLE TRAILS AND ROUTES (WITH INITIATIVES)



EXISTING PLANNED TRAIL SYSTEM



TOWN TRAILS FOR MOBILITY



WATER TRAIL W/ NEW ACCESS POINTS



LOCAL VAN ROUTE AND HUB



EXISTING, NEAR AND LONG TERM INITIATIVES





## ENERGY RESILIENCY - ENERGY INFRASTRUCTURE INVESTMENT SITES

**This map shows potential sites for energy infrastructure investment.**

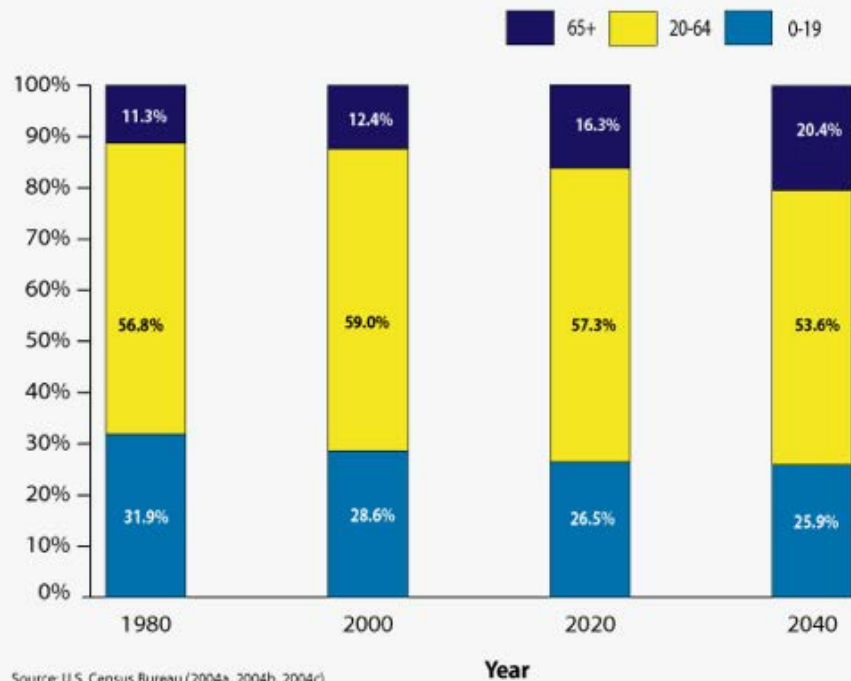
1. Football field
2. Montgomery streets
3. Montgomery General Hospital parking deck
4. Aging-in-Place and workforce housing
5. Longacre property



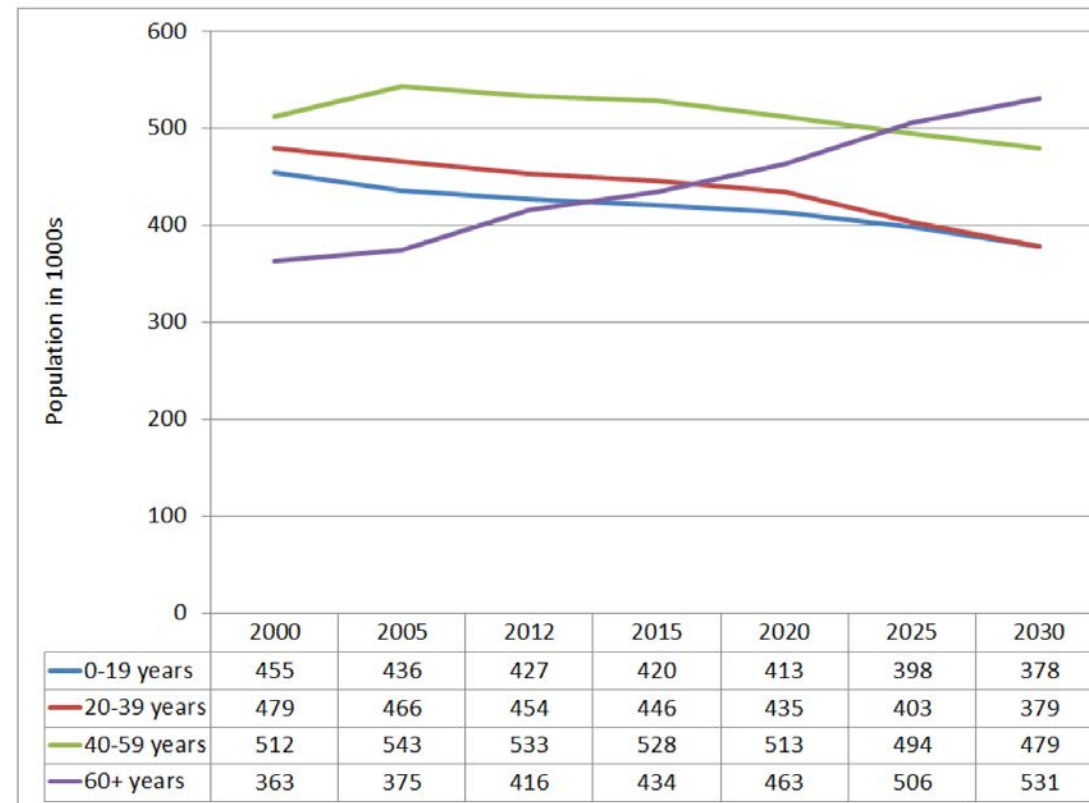
# SILVER TSUNAMI – THE AGING OF THE U.S.

The U.S. population is aging – the West Virginia population is aging at a faster rate.

Age Distribution of the Population, 1980-2040



Source: U.S. Census Bureau (2004a, 2004b, 2004c).



Source: U.S. Census Bureau Projections, 2009

<https://acl.gov/sites/default/files/programs/201611/West%20Virginia%20Epi%20Profile%20Final.pdf>

<https://www.urban.org/policy-centers/cross-center-initiatives/program-retirement-policy/projects/data-warehouse/what-future-holds/us-population-aging>



# CONCLUSION

## Key takeaways:

- The process is what is important.
- Availability of funding – a hundred-year opportunity, but only if there is a plan that integrates all the Seven Vital Conditions for Community Health and Well-being
- Demographic changes - rising senior population
- Discipline to stick to plan - Civic Muscle

[skeller@dynamis-hc.com](mailto:skeller@dynamis-hc.com)

## Next Steps

- Leadership
- Task forces

*“Start by doing what's necessary; then do what's possible; and suddenly you are doing the impossible.” – St. Francis of Assisi*

# Thank you!



# CONTACT US

DYNAMIS ADVISORS INC

8564 E. Washington #604

Chagrin Falls, OH. 44023

phone: (440) 247-7876

website: [www.dynamis-hc.com](http://www.dynamis-hc.com)

LinkedIn: [www.linkedin.com/company/dynamis-advisors/](http://www.linkedin.com/company/dynamis-advisors/)

email:

[skeller@dynamis-hc.com](mailto:skeller@dynamis-hc.com) - Scott Keller, President, Dynamis Advisors

[wakeller@dynamis-hc.com](mailto:wakeller@dynamis-hc.com) – William Keller, MHA, Community Health Design Specialist