

An aerial photograph of a rural town during autumn. The scene features a winding river on the left, a main road running through the center, and various buildings including houses and a large farm with silos. The trees are in various stages of autumn, showing yellow, orange, and green. The sky is clear and blue.

Public Health & Community Development: Building Community Infrastructure, Health Equity & Economic Prosperity

Ashley Hernandez, MSc
Mario A. Guel, MJur
Build Healthy Places Network
April 26th, 2024



Build Healthy
Places Network

The Build Healthy Places Network

We are the national center at the intersection of **community development and health**, leading a movement to accelerate investments and speed and spread solutions for building healthy and prosperous communities.



Engage



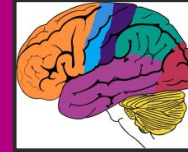
Educate



Synthesize

Goal: Understanding the Public Health Sector's role in multi-sector partnerships that improve community health and wellbeing

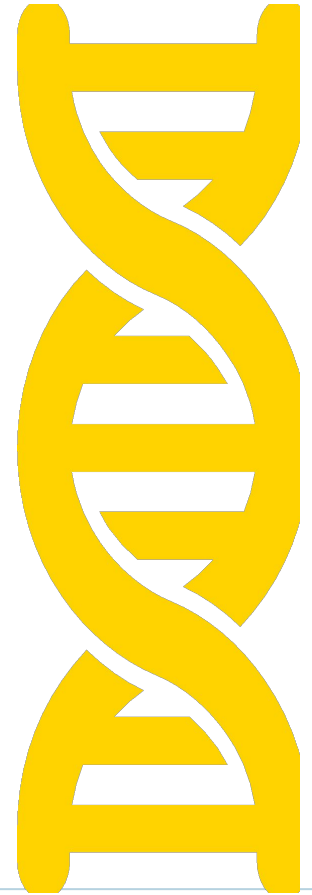
- Health happens in neighborhoods
- The case for multi-sector upstream investments
- Road to health equity lies in partnerships: Spotlight on Community Development and Public Health
- Places to start for implementation: The Public Health Primer and learning from others



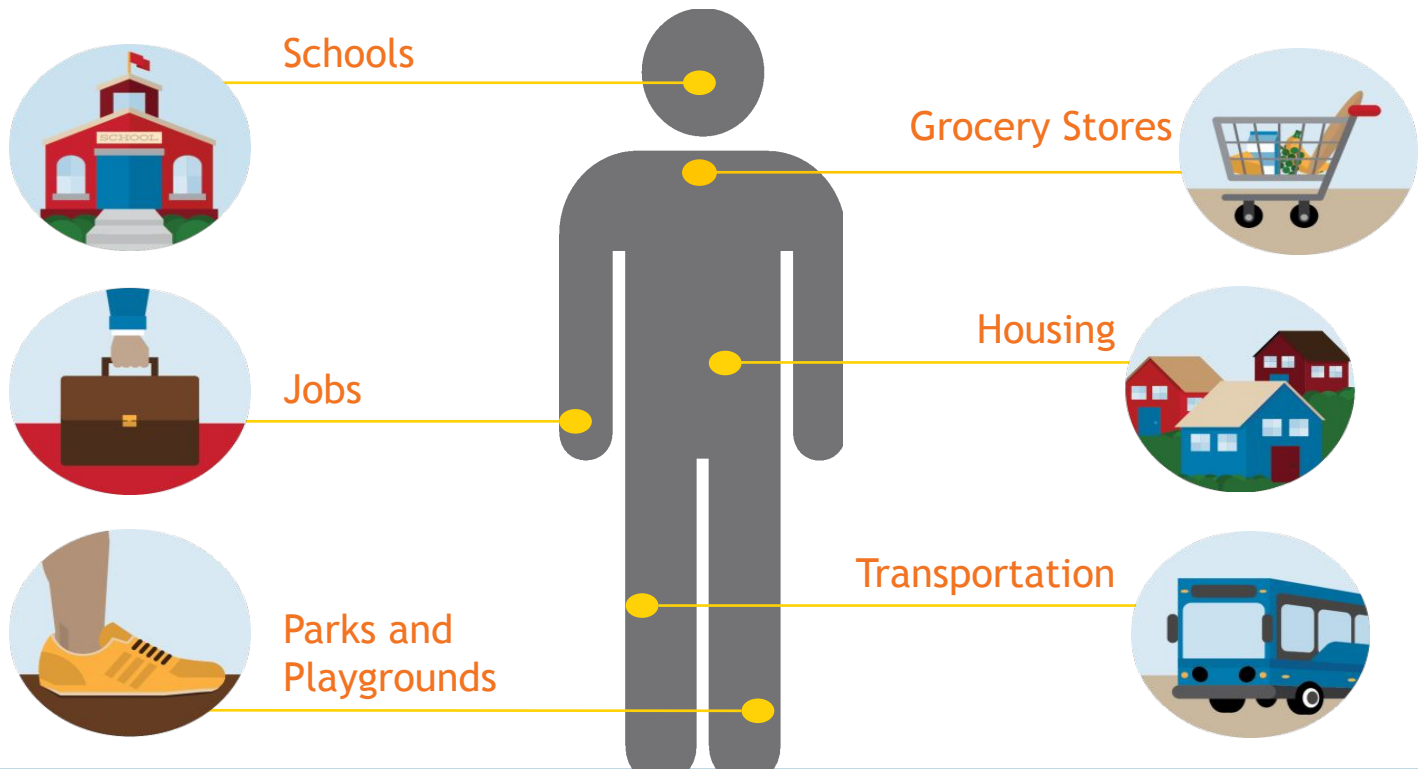
Health Happens in Neighborhoods

Community Development creates health in neighborhoods

48314 >



People Get Sick Because Of Their Social And Physical Environments



Health Disparities

Short distances to large gaps in health

12-year life expectancy gap within North Carolina's Research Triangle

Raleigh-Durham, North Carolina



Vital Conditions for Well Being



Thriving
Natural World



Basic Needs for
Health & Safety



Humane
Housing



Meaningful
Work & Wealth



Lifelong
Learning

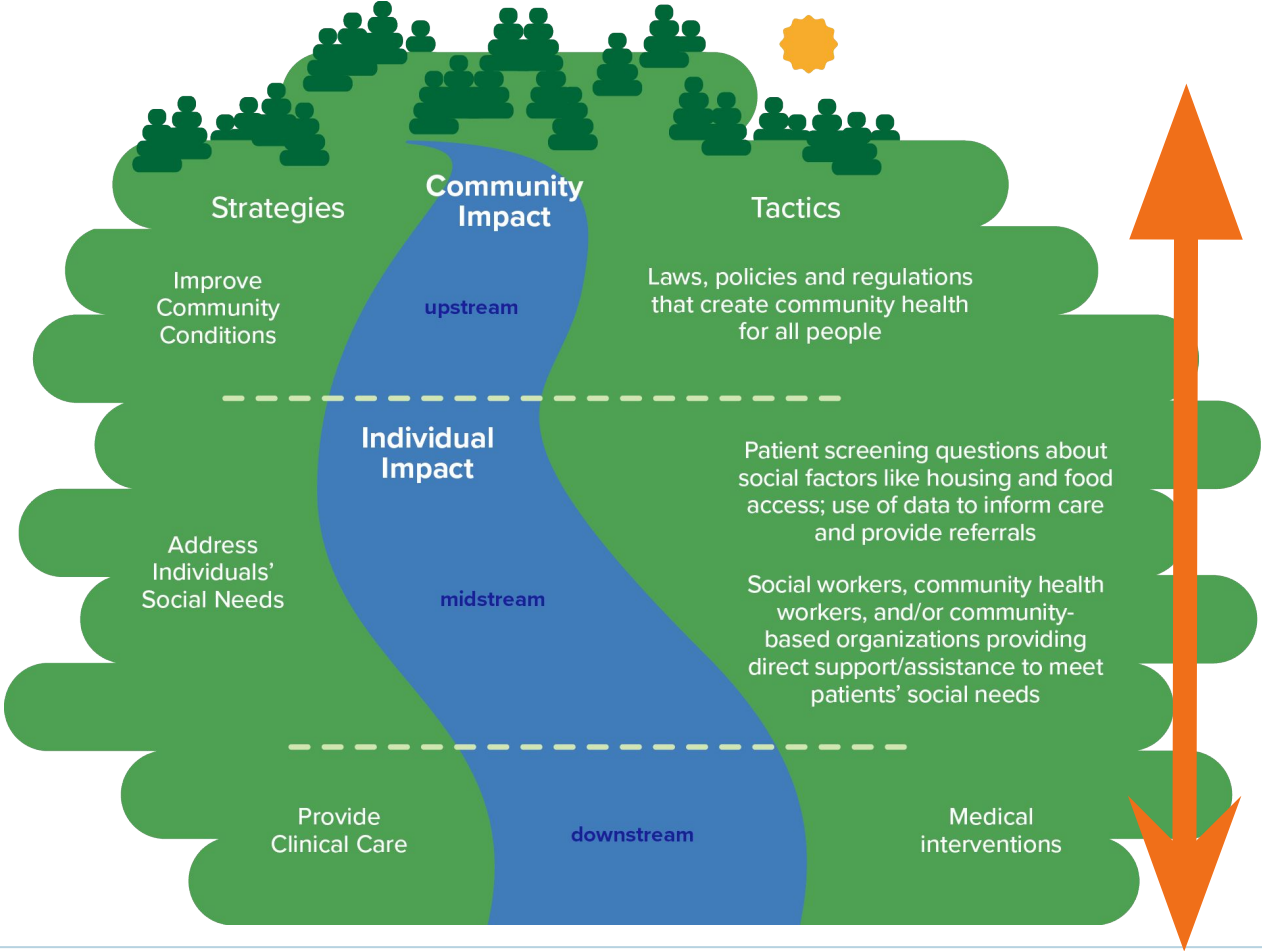


Reliable
Transportation



Belonging &
Civic Muscle

Deepening impact through upstream investments in the vital conditions.



Exploring Community Development



CDFIs

Community Development Finance Institutions



DreamSpring



NATIONAL ASSOCIATION FOR LATINO COMMUNITY ASSET BUILDERS



Nonprofit Finance Fund

LOW INCOME INVESTMENT FUND



NATIVE COMMUNITY CAPITAL

CDCs & Housers

Community Development Corporations



STEWARDS OF AFFORDABLE HOUSING FOR THE FUTURE



EAST BAY ASIAN LOCAL DEVELOPMENT CORPORATION
BUILDING HEALTHY, VIBRANT AND SAFE NEIGHBORHOODS



VIRGINIA COMMUNITY VOICE



Community Development in West Virginia



MATURE SECTOR WITH MANY PLAYERS

Network of Thousands of Organizations

- Community Development Corporations (CDCs)
- Community Development Financial Institutions (CDFIs)
- For-profit & non-profit affordable housing developers
- Regulated for-profit banks
- FDIC, OCC, and Federal Reserve system



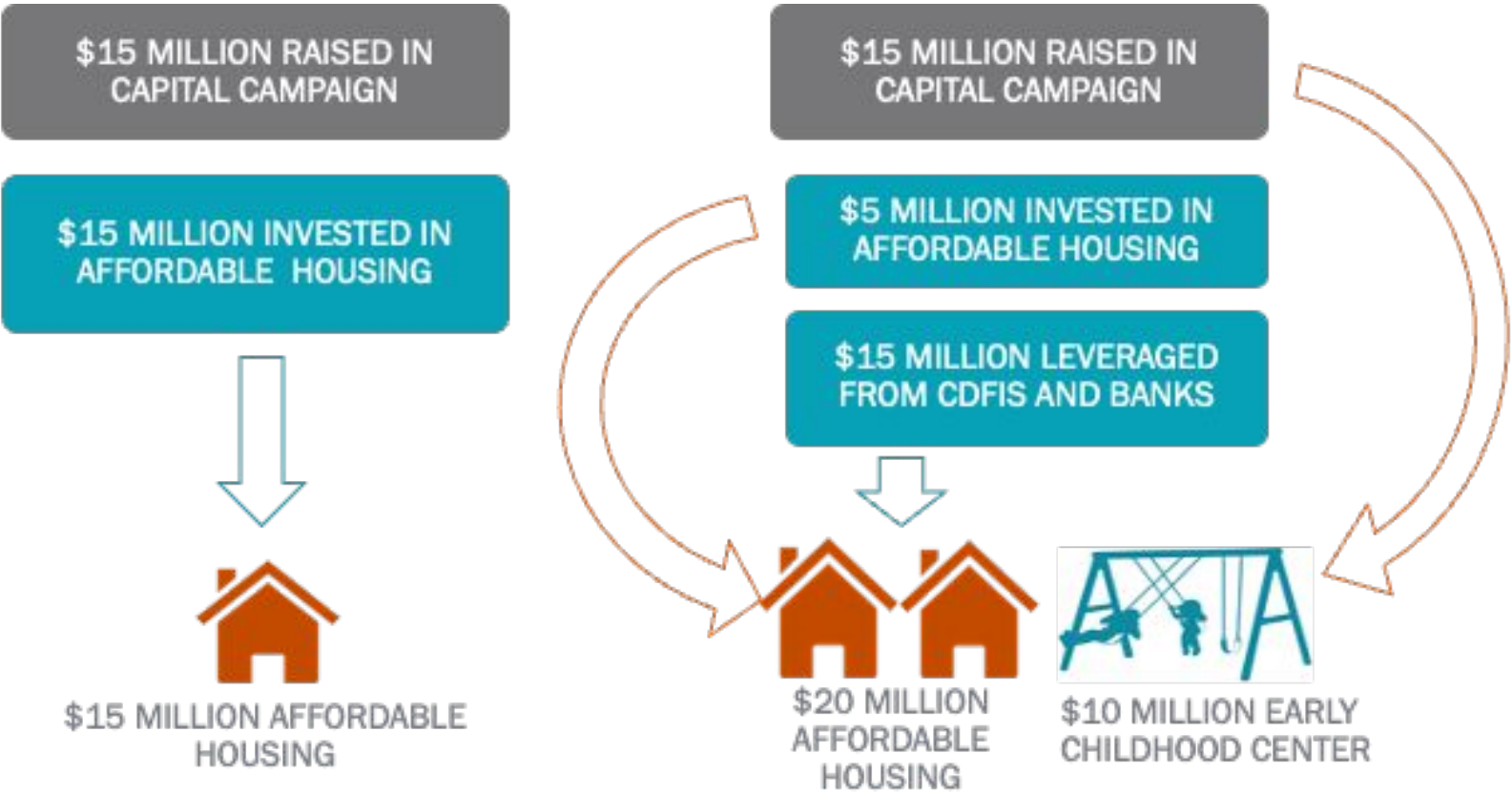
HOW MUCH MONEY? AND WHERE DOES IT COME FROM??

Over **\$450 BILLION DOLLARS** (industry assets)

- Federal/state tax credits & grants
 - Low Income Housing Tax Credit (LIHTC)
 - New Markets Tax Credit (NMTC)
 - Community Development Block Grants (CDBG)
 - Healthy Food Financing Initiative (HFFI)
- Community Reinvestment Act dollars
 - CRA-motivated loans and impact investments from private, for-profit banks



Community Development is in the Leveraging Business



Community Development Project Examples



Omaha, Nebraska

Family housing with downstairs in-law units



Coatesville, Pennsylvania

Affordable senior housing above a community clinic

Community Development Project Examples



KIPP Academy, Washington D.C.
Charter school



Neighborhood Centers Inc, Houston
Childcare, preschool, and family resource center

Community Development Project Examples



Blue Hill Co-op, Blue Hill, Maine
A cooperatively-owned grocery store



Rural Community Development Resources, Yakima, Washington
Fiddles Coffee House (Acquisition & Rehab)

Why strategic cross sector partnerships?

- **Utilizing informal networks to bridge formal sectors**
- **Facilitate combined efforts to address the challenges in attracting capital**
- **Allows for community knowledge to drive solutions**
- **Creates holistic picture with data across sectors**
- **Share risk and reward**


Health Partnership Ecosystem


- Community Leaders
- State and Local Health Departments
- Healthcare
- Community Development
- Local Government
- Business




Public Health Primer: Engaging with Community Development for Health Equity

A partnership between

 Build Healthy Places Network

 NATIONAL ASSOCIATION OF CHRONIC DISEASE DIRECTORS

 **Overview of Public Health Primer**

Build Healthy Places Network (BHPN) and *National Association of Chronic Disease Directors* (NACDD) held a *thought leader roundtable* gathering national, state, and local leaders to bridge a way for public health and community development sectors to work together advancing health and racial equity through upstream partnerships. This primer shares the recommendations emerging from our roundtable and illustrates opportunities for public health to advance racial equity goals through engagement with those responsible for helping to shape the built environment. Support for 'Public Health Primer: Engaging Community Development for Health Equity' was provided by NACDD and the Robert Wood Johnson Foundation.

A 2023 survey* found that 81% of executives in public health agencies and 72% of state and local government public health employees believed addressing racism as a public health crisis should be part of their work. However, only 39% of those employees reported being highly engaged in such efforts.

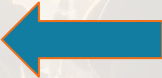
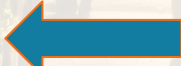
This primer seeks both to create a starting point for the work and to challenge our perspectives of where

Quick Links

- [How Public Health Practitioners Can Expand the Vital Conditions Framework](#)
- [Get Acquainted with the Sectors](#)
- [Discover New Partners](#)



Public Health Primer

- Explains the vital conditions for health and wellbeing
- Introduces the Community Development Sector
- Roles the Public Health Sector can play in multi-sector partnerships 
- Includes a Partner Finder for you to discover partners in YOUR region
- Case Studies of successful multi-sector partnerships 

Public Health Organizations



The logos above represent national organizations; however, the public health sector also includes state, county, and city organizations that are both public and private.

Community Development: Public Health's Role

- Convener, bringing together like minded community partners
- Co-location of programs & services
- Data sharing (CHNA/CHIP)
- Advocacy and social/political clout
- Socializing the idea of the Vital Conditions/SDOH



SCS Transportation program

- Creation of new bus route connecting two rural communities
- Bus route addresses transportation, workforce, healthcare access, and affordable housing needs
- Multi-sector partnerships allowed for blended funding

Partnerships

- Southwest Community Services (Community Action Agency)
- Dartmouth Health (Health Care System)
- The Greater Sullivan County Public Health Advisory Council (Public Health)



Dartmouth Hitchcock
Medical Center



Greater Sullivan County
Public Health Network





Public Health Partner:



- One of 13 New Hampshire public health regions. Includes 15 rural towns and one city with a combined population of approximately 47,000 people.
- Convenes Public Health Advisory Council (PHAC) consisting of community leaders representing multiple sectors and towns/cities throughout the Public Health Region.
- PHAC hosts community partner meetings on a monthly basis.

Public Health Partner's Role :

Convener, bringing together like minded community partners

- Public Health Advisory Council had monthly meetings created space for multi-sector partners to discuss shared goals and resource sharing

Data sharing (CHNA/CHIP)

Place image here

- The CHIP (Community Health Improvement Plan) prioritized transportation, bolstering mutual accountability of partners to address transportation as a shared risk with shared rewards.

Socializing the idea of the Vital Conditions/SDOH

- Fostered shared trust and understanding that transportation is a vital condition affecting all multi-sector members

Organization Reflection Questions: A Guide



How can communities play a central role in analysis and use of data, to reflect their unique lived experiences, historical context and inform community health needs?



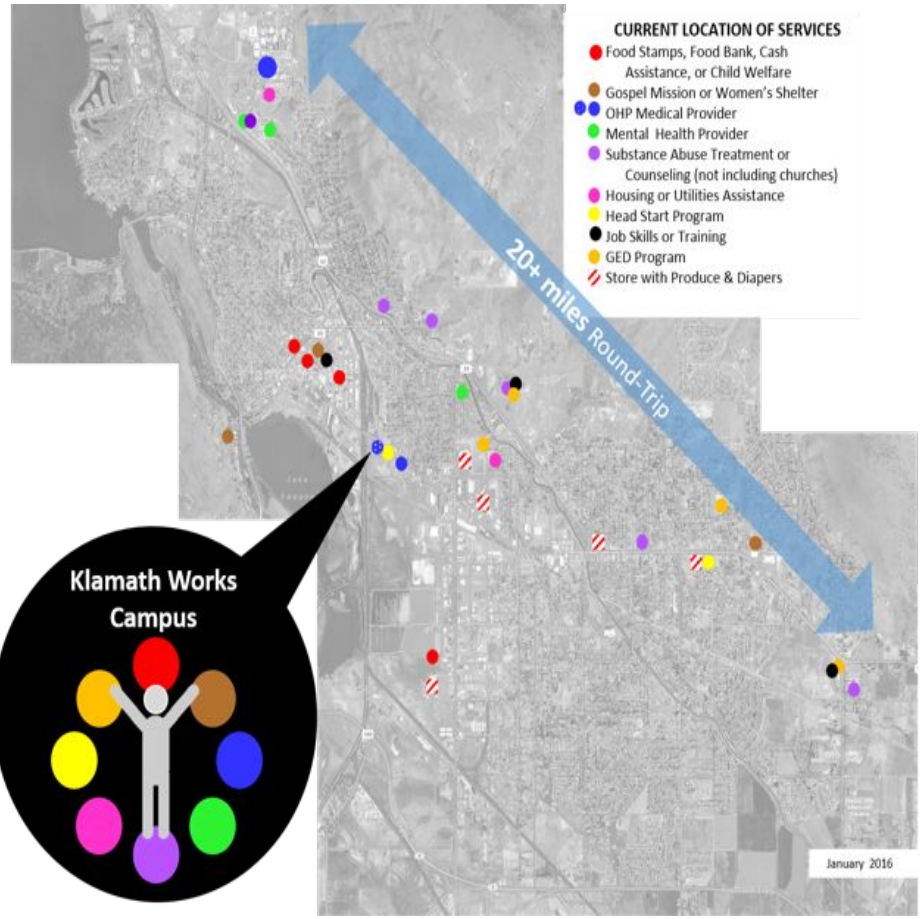
Klamath Falls, Oregon

Klamath Works Human Service Campus:

- 18 acre campus
- Hub for public and private social services providers.
- Co-locating services, encouraging coordination.

Services on campus include:

- Klamath Falls Gospel Mission
- Link Access Center, a collaborative behavioral health and sobering center
- Klamath Works Job Training Program



BASIC NEEDS FOR HEALTH & SAFETY AS A VITAL CONDITION 

Hospital

- Medical screening physical or mental

Mission Gospels:

- Food and shelter

Link Access Center

- Intoxication & addiction support

RELIABLE TRANSPORTATION AS A VITAL CONDITION 

Co-localization of services within walking distance.

BELONGING & CIVIC MUSCLE AS A VITAL CONDITION 

Gospel Mission:

- Spaces of social connection
- Community garden, commercial kitchen, dining hall and chapel hall

Link Access Center: [click image here](#)

- Offers culturally informed services

MEANINGFUL WORK & WEALTH AS A VITAL CONDITION 

Klamath Works ; jobs program with coaching and individualized plans



Public Health Partner



- County Certified Community Behavioral Health Clinic (CCBHC)
- Local Mental Health Authority in Klamath
- Works with Oregon Health Authority to manage mental health facilities in the county.
- Diverse range services for adults and children, 24-hour crisis support, mental health assessments, psychiatric assessments and medication management.



- Convenor
- Purchased land, land swap
- Social capital, fund raising



- Venue for social connection
- Community garden, Commercial kitchen

Cross sector partnership community orgs collaborate on common vision: **restoring self worth & dignity**

- **Co-localization and coordination of services**
- Social capital and fund raising diversification
- Culturally responsive services



- Runs Link Access Center
- Addiction & mental health
- Healthcare plan enrollment
- Housing referrals

Organization Reflection Questions: A Guide



In your own region, which organizations are similar in mission, practice, or approach to organizations operating in other sectors within your community?



Build Healthy
Places Network



BuildHealthyPlaces.org



@BHPNetwork



[linkedin.com/company/
Build-Healthy-Places-Network](https://linkedin.com/company/Build-Healthy-Places-Network)



ahernandez@buildhealthyplaces.org

mguel@buildhealthyplaces.org

