



Build Healthy
Places Network

Healthcare and Community Development: Leveraging Partnerships to Improve Health

Presentation for Wild, Wonderful, and Healthy West Virginia

Douglas Jutte, MD, MPH, Executive Director, Build Healthy Places Network

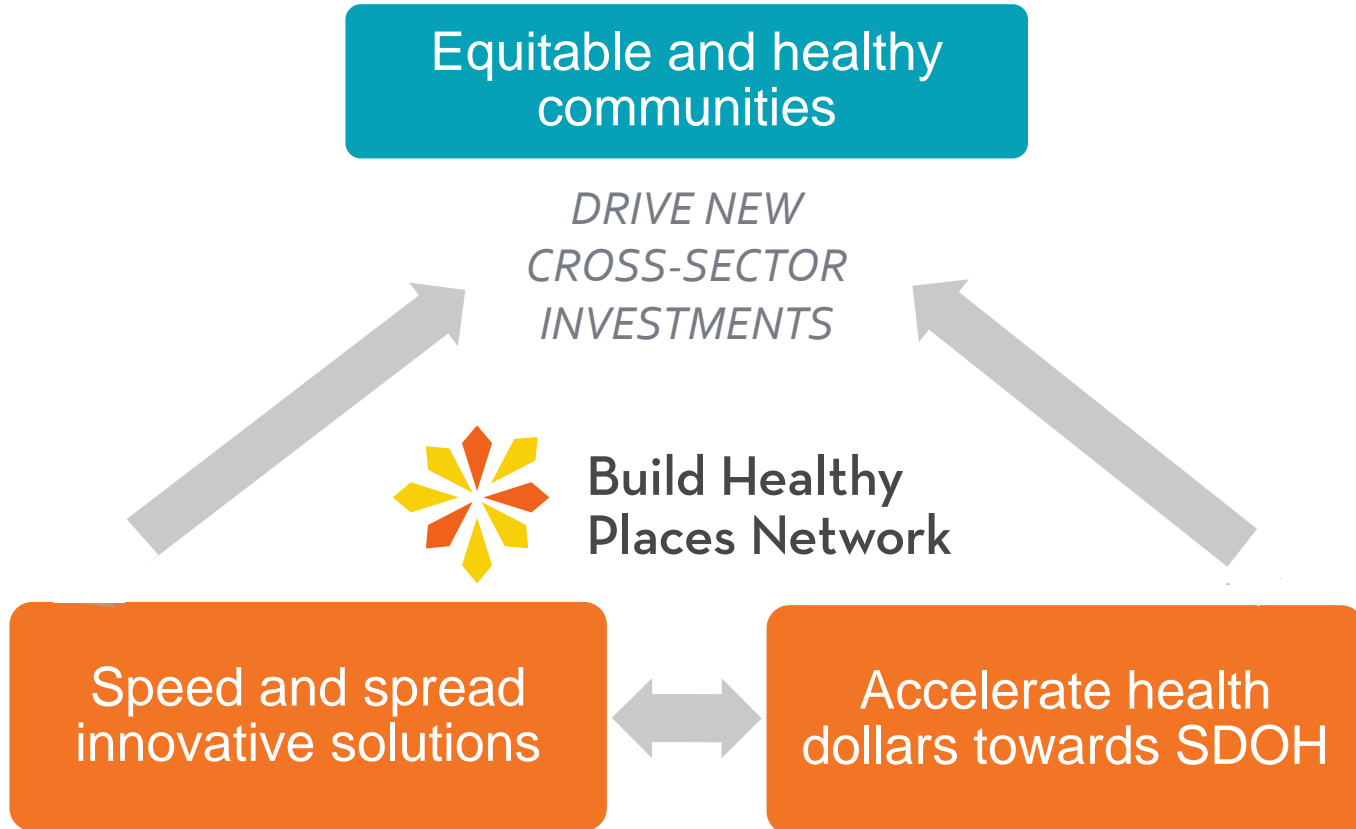
November 2, 2022

PIGEON ROOST FARM





Achieving Better Health through Better Partnerships



OVERVIEW

Why Are We Talking About Communities?

What is Community Development?

Scope, Scale, and Major Players

Healthcare & Community Development Working Together

Resources for Next Steps

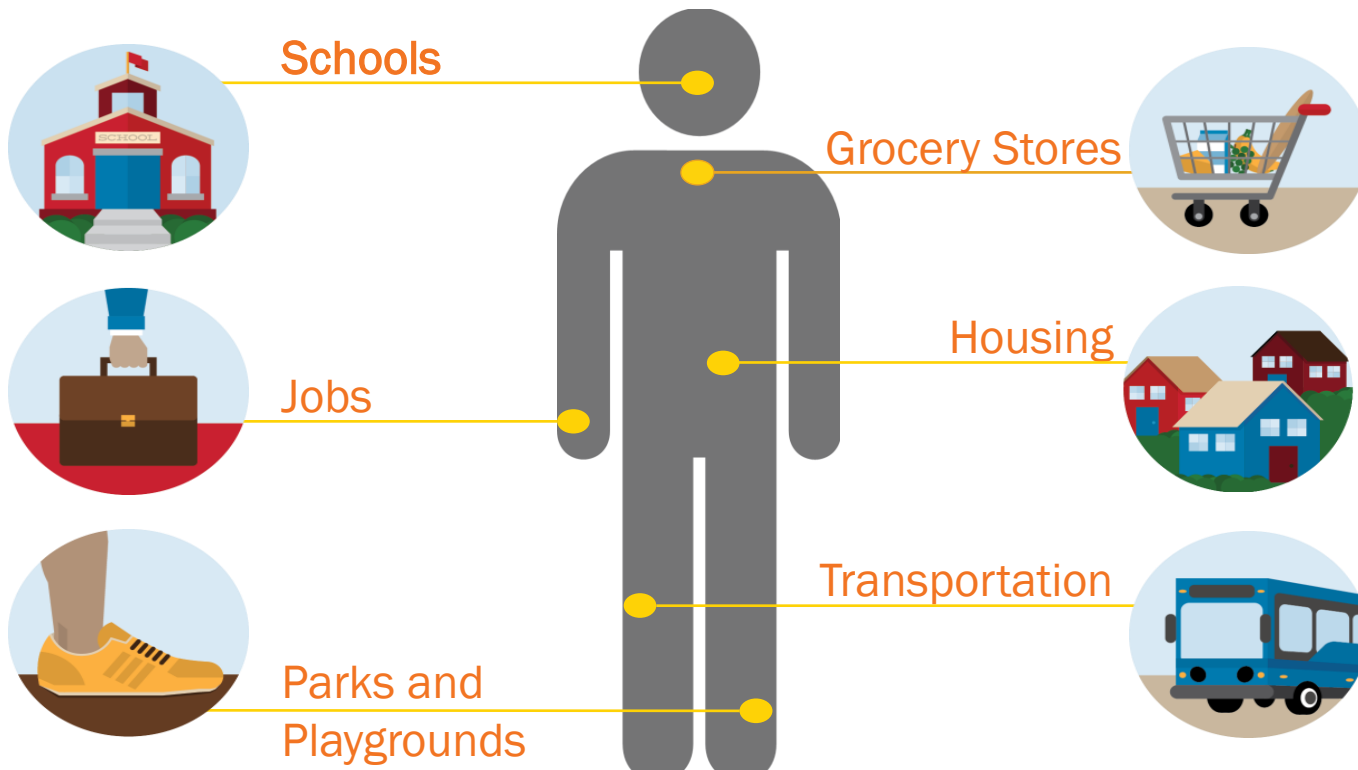
Why Are We Talking About Communities?







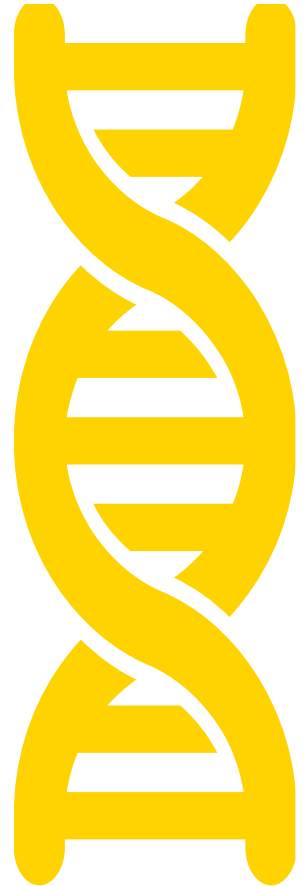
PEOPLE GET SICK BECAUSE OF THEIR SOCIAL AND PHYSICAL ENVIRONMENTS





IN DETERMINING YOUR HEALTH...

25301 >

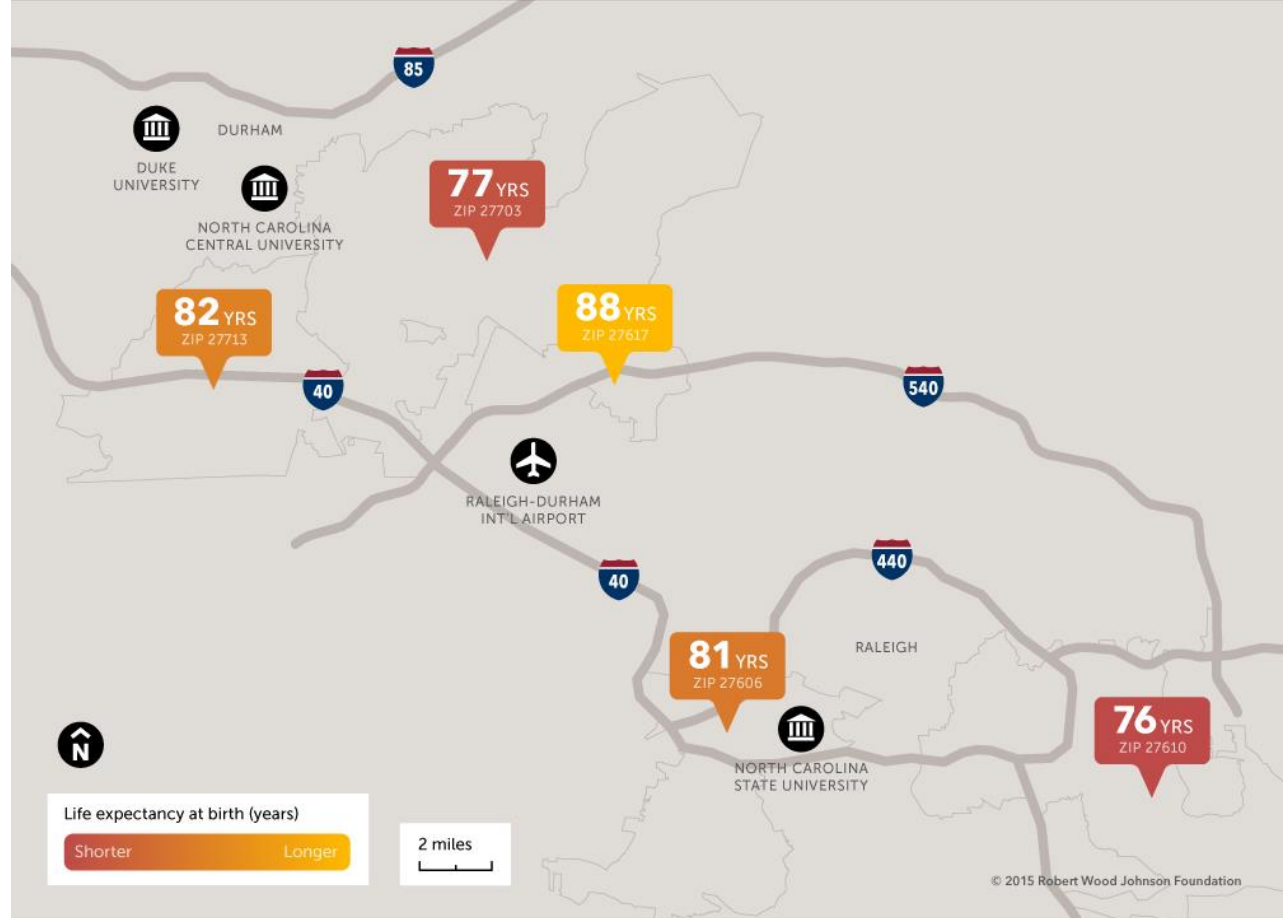




HEALTH DISPARITIES

Short distances to
large gaps in
health

12-year life expectancy
gap within North
Carolina's Research
Triangle



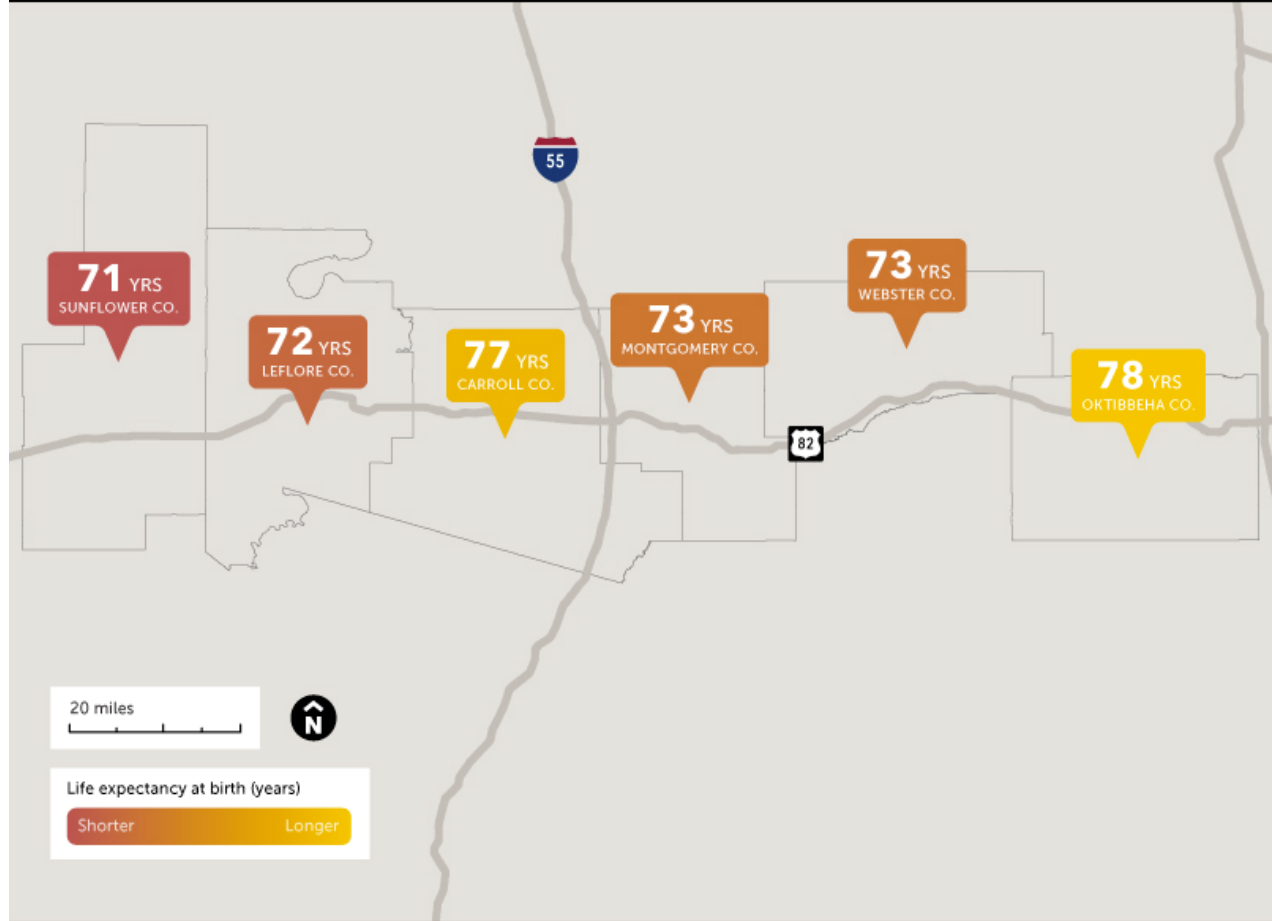
Raleigh-Durham, NC



HEALTH DISPARITIES

Similar all over the nation.

Life expectancy decreases by 7 years within a just a 1-hour drive along Route 82



Northern Mississippi



COMMUNITY DEVELOPMENT IS IN THE ZIP CODE IMPROVEMENT BUSINESS



What is Community Development?

The background features a vibrant orange sunburst pattern with rays of varying lengths radiating from the right side. At the bottom of the image, there is a horizontal bar composed of several colored segments: blue, orange, yellow, dark blue, light blue, purple, red, and dark blue.



ZIP CODE IMPROVEMENT: HOUSING COORDINATED WITH SERVICES



Omaha, Nebraska
Family housing with downstairs in-law units



Coatesville, PA
Affordable senior housing above a community clinic



ZIP CODE IMPROVEMENT: COMPREHENSIVE YOUTH DEVELOPMENT



KIPP Academy, Washington D.C.
Charter school



Neighborhood Centers Inc, Houston
Childcare, preschool, and family resource center



ZIP CODE IMPROVEMENT RESIDENT-FOCUSED ECONOMIC DEVELOPMENT



Blue Hill Co-op, Blue Hill, Maine
A cooperatively-owned grocery store

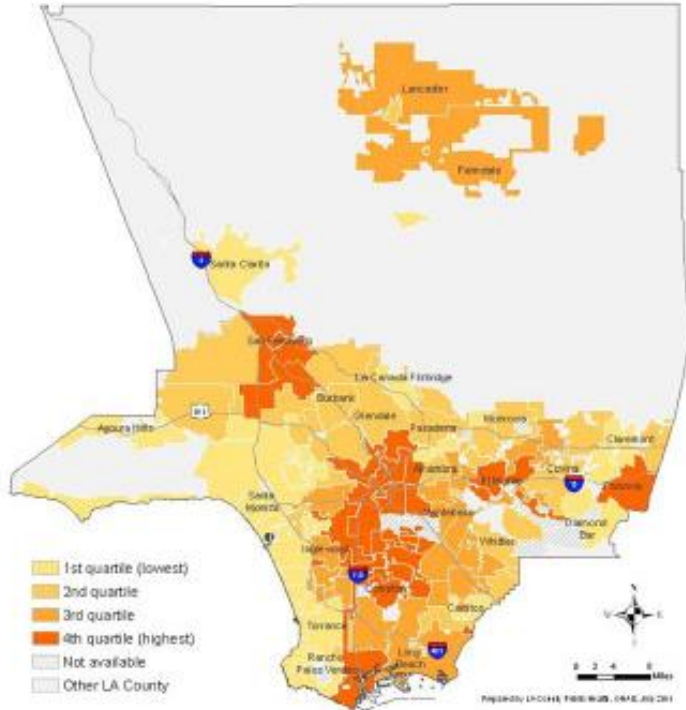


**Thunder Valley CDC, Workforce Development,
Porcupine, SD** Sustainable construction

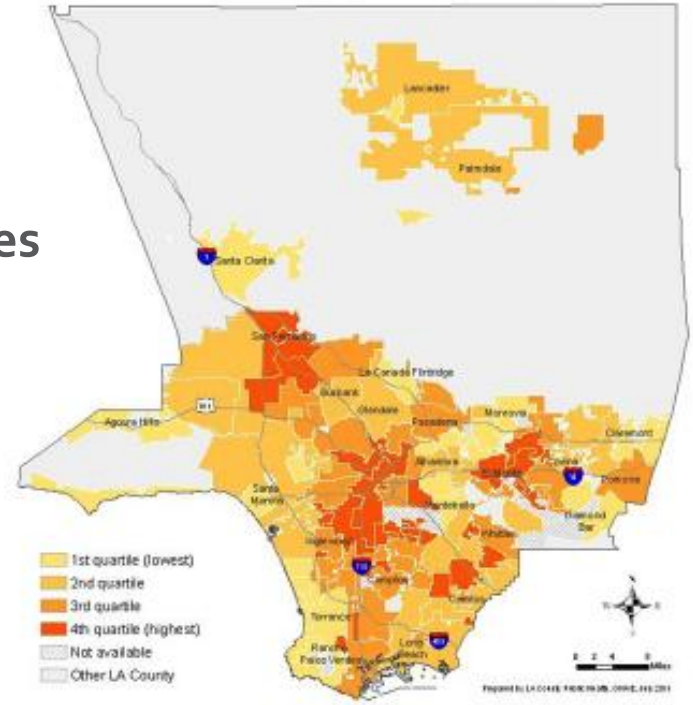


COMMUNITY DEVELOPMENT & HEALTH WORK SIDE-BY-SIDE

Economic hardship by city



Childhood obesity by city



Los Angeles
County



HEALTHCARE NEEDS PARTNERS TO ADDRESS SDOH





COMMUNITY DEVELOPMENT ADDRESSES IMPORTANT SDOH



The background features a series of overlapping, semi-transparent orange rays emanating from the right side, creating a sunburst effect. At the bottom of the slide, there is a horizontal bar composed of several colored segments: blue, orange, yellow, dark blue, light blue, purple, red, and dark blue.

Community Development: Scale, Scope, & Major Players

MATURE SECTOR WITH LARGE SCALE INVESTMENTS

Over \$200 Billion Dollars
Annually Directed into
Low-Income Neighborhoods

Federal/State Tax Credits & Grants

- Low Income Housing Tax Credit (LIHTC)
- New Markets Tax Credit (NMTC)
- Community Development Block Grants (CDBG)
- Healthy Food Financing Initiative (HFFI)

Community Reinvestment Act (CRA) Dollars

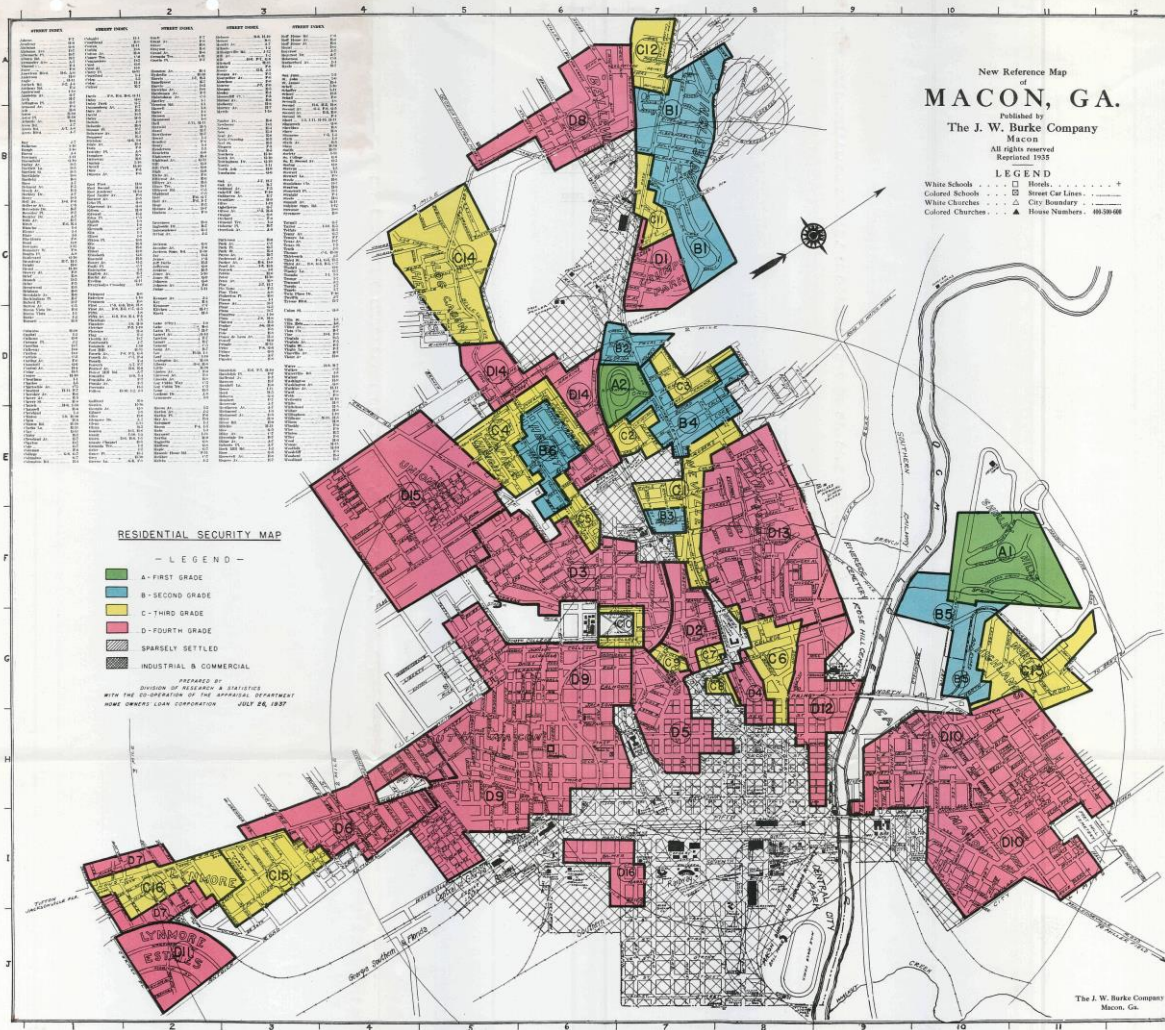
- CRA-motivated loans and investments from private, for-profit banks



Community Reinvestment Act (CRA)

Federal anti-redlining regulations passed in 1977

Redlining map of Macon, GA, 1937



MATURE SECTOR WITH MANY PLAYERS

Network of Thousands of Organizations

- Community Development Corporations (CDCs)
- Community Development Financial Institutions (CDFIs)
- For-profit & non-profit affordable housing developers
- Regulated for-profit banks
- FDIC, OCC, and Federal Reserve system



NATIONAL UMBRELLA ORGANIZATIONS



Visit BuildHealthyPlaces.org's **Partner Finder** for leading CDFIS and CDCs in your community



Welcome to Partner Finder

Welcome to Partner Finder, a collection of directories to help you find the community development and health organizations nearest to you. Partner Finder helps you take the first steps to identify potential cross-sector partners in improving the health and well being of your community.



NACCHO

National Association of County & City Health Officials



n.ceda

building prosperous communities together



National Network
of Public Health Institutes



NeighborWorks®

AMERICA



OPPORTUNITYFINANCE NETWORK



UNITED STATES FEDERAL RESERVE SYSTEM

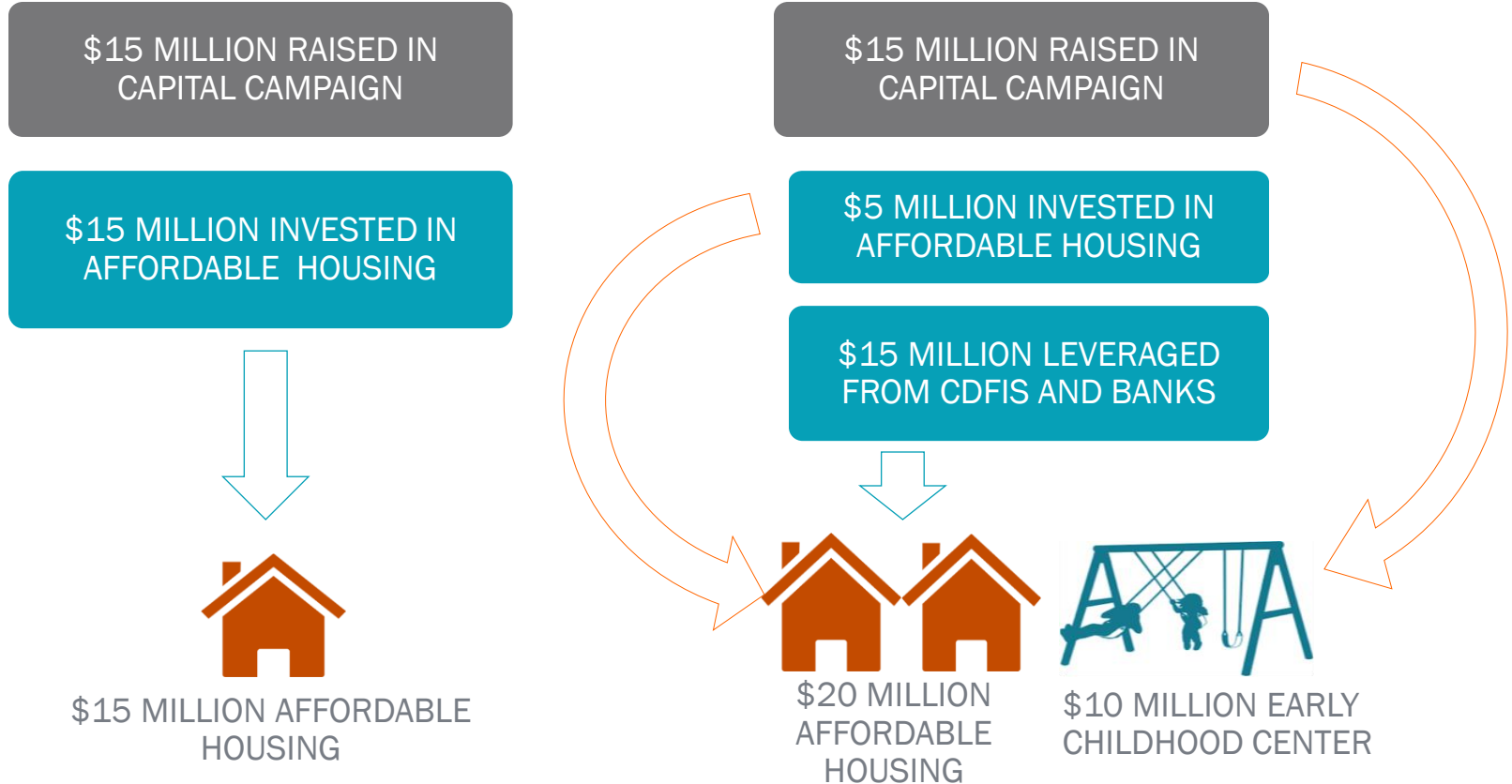
 COMMUNITY DEVELOPMENT IN WEST VIRGINIA



Visit BuildHealthyPlaces.org's **Partner Finder** for leading CDFIS and CDCs in your community



COMMUNITY DEVELOPMENT IS IN THE LEVERAGING BUSINESS



The background features a vibrant orange color with a pattern of lighter orange rays emanating from the right side, creating a sunburst effect. At the bottom of the image, there is a horizontal bar composed of several colored segments: blue, orange, yellow, dark blue, light blue, purple, red, and dark blue.

Healthcare & Community Development Working Together

Roles for Healthcare in Accelerating Community Development

- Advocacy and social/political clout
- Data sharing (CHNA/CHIP)
- Co-location of programs & services
- Community Benefit / Grants
- Loan guarantees / Lines of credit
- Real estate: land swap, lease, donate
- Financial capital: direct loans or investments in loan funds





5 hospital systems and healthcare plan: joint \$21.5 million donation



 Children's Hospital
of Philadelphia®

Free
LIBRARY OF
PHILADELPHIA

Community Health and
Literacy Center using NMTC \$\$





March 2018, Toledo, Ohio
ProMedica & LISC launch \$45M partnership



Interior of Market on the Green:
Downtown Toledo is no longer a food desert



Over 100 new or rehabilitated single-family homes





Bikes for All People

Fresh Market

Small business & teen
workforce training



All
People's
Fresh
Market

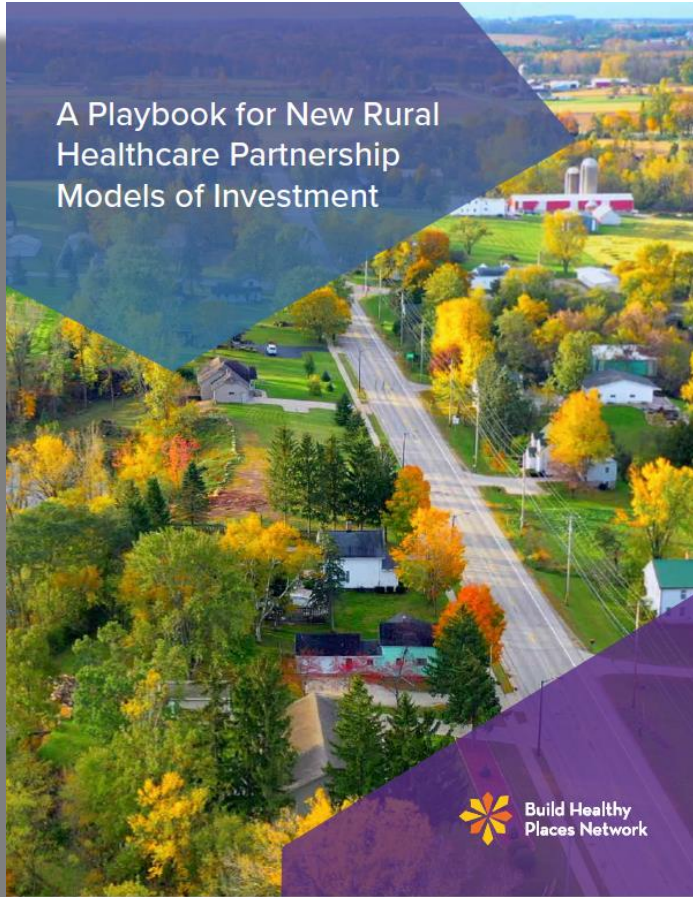


All People's Fresh Market
food hub



58 affordable apartments and
2,500 sq ft job training center

A Playbook for New Rural
Healthcare Partnership
Models of Investment



**Download
Here**



SUPPORTING LOCAL CONTROL



Saint Alphonsus Health System and LEAP Housing Trust (Idaho)



Saint Alphonsus



LEAPCHARITIES



STRENGTHENING INFRASTRUCTURE TO SUPPORT HEALTHCARE ACCESS



Dartmouth Medical Center & Southwestern Community Services (NH)

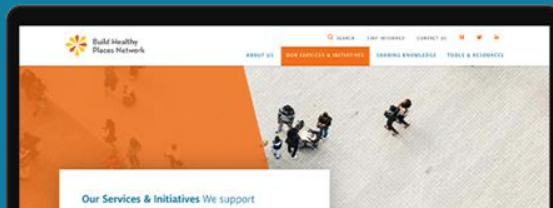
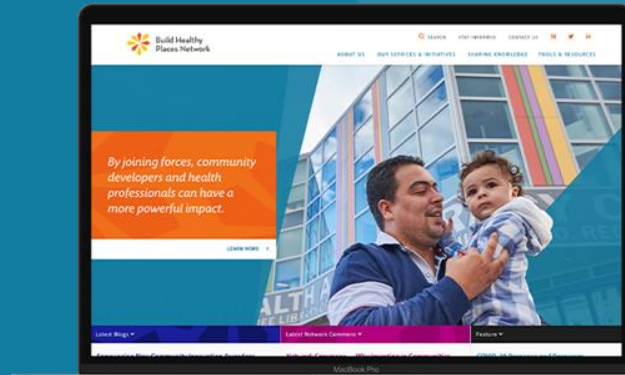
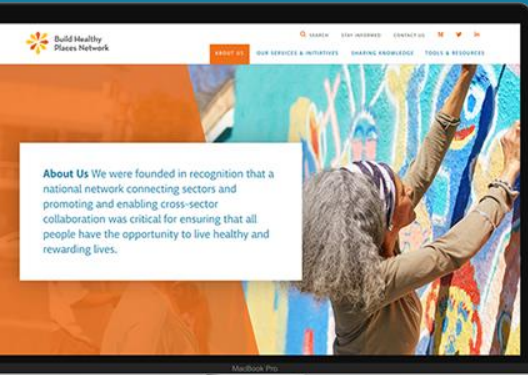


Resources for Next Steps

The background features a sunburst pattern of orange rays emanating from the right side. At the bottom, there is a horizontal bar composed of several colored segments: blue, orange, yellow, dark blue, light blue, purple, red, and dark blue.

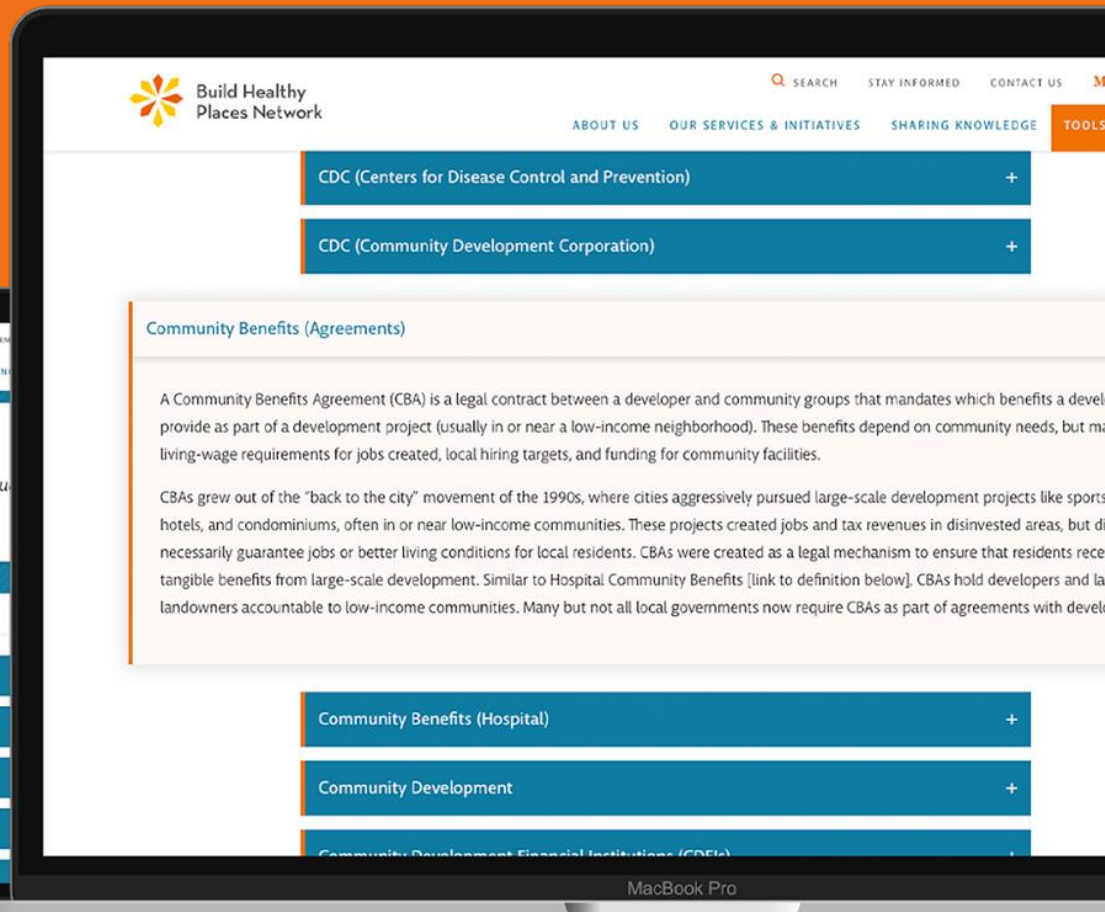
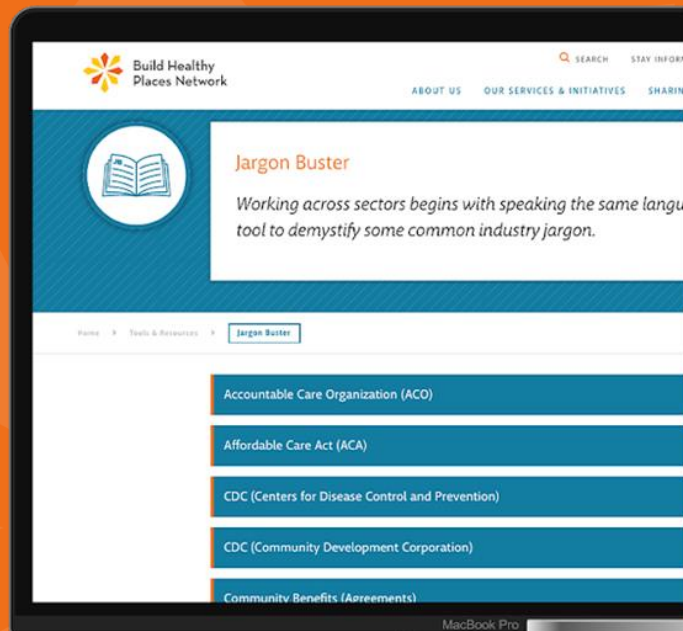
The Build Healthy Places Network Website

BuildHealthyPlaces.org





Jargon Buster





Crosswalk



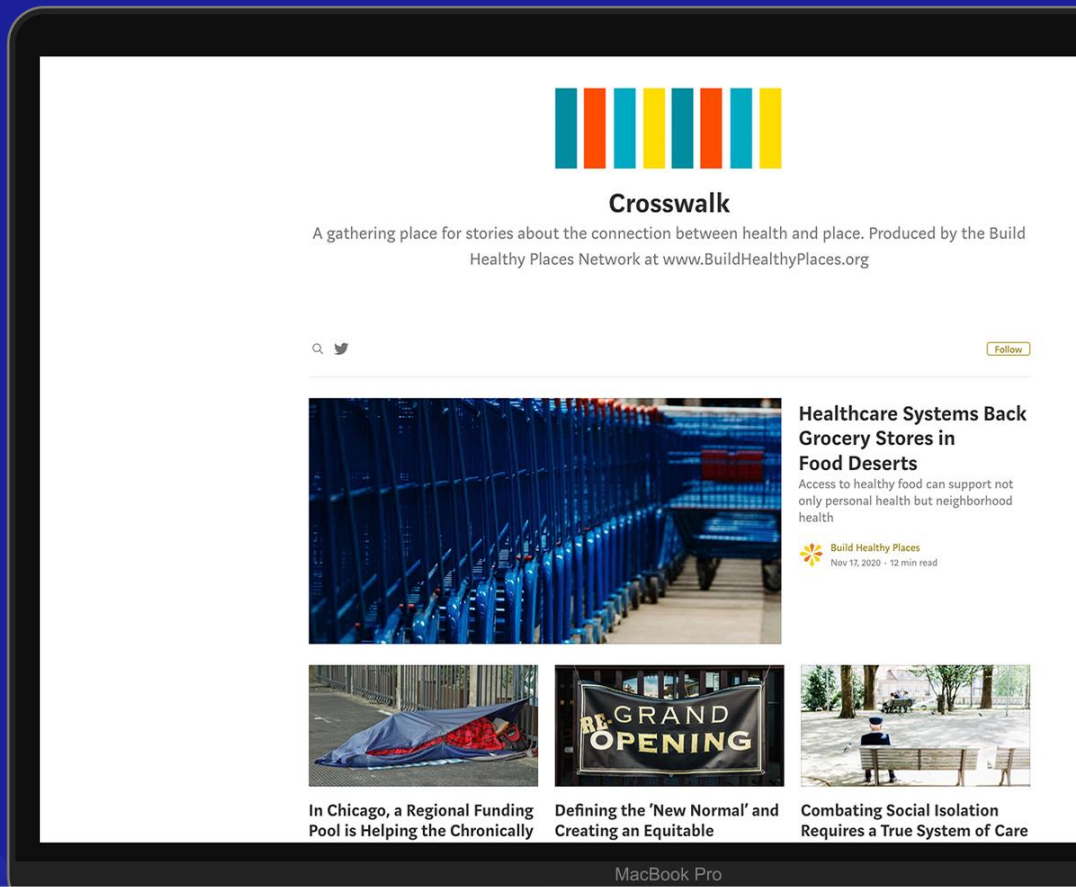
Defining the 'New Normal' and Creating an Equitable Recovery after COVID-19



Combating Social Isolation Requires a True System of Care

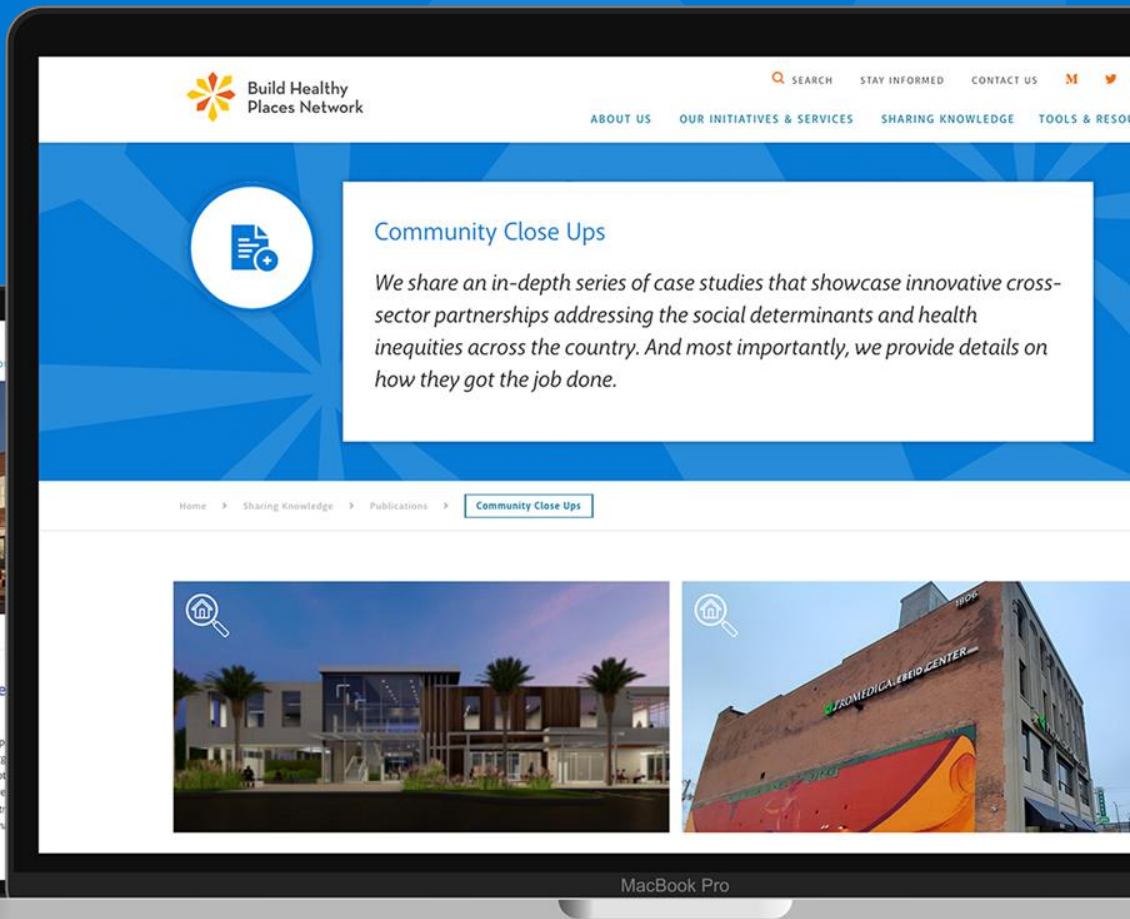
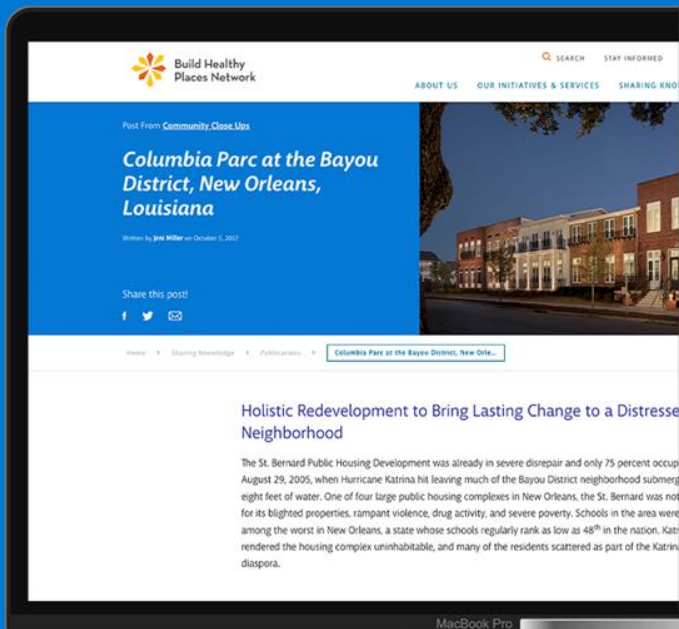


Financial Remedy on the Reservation



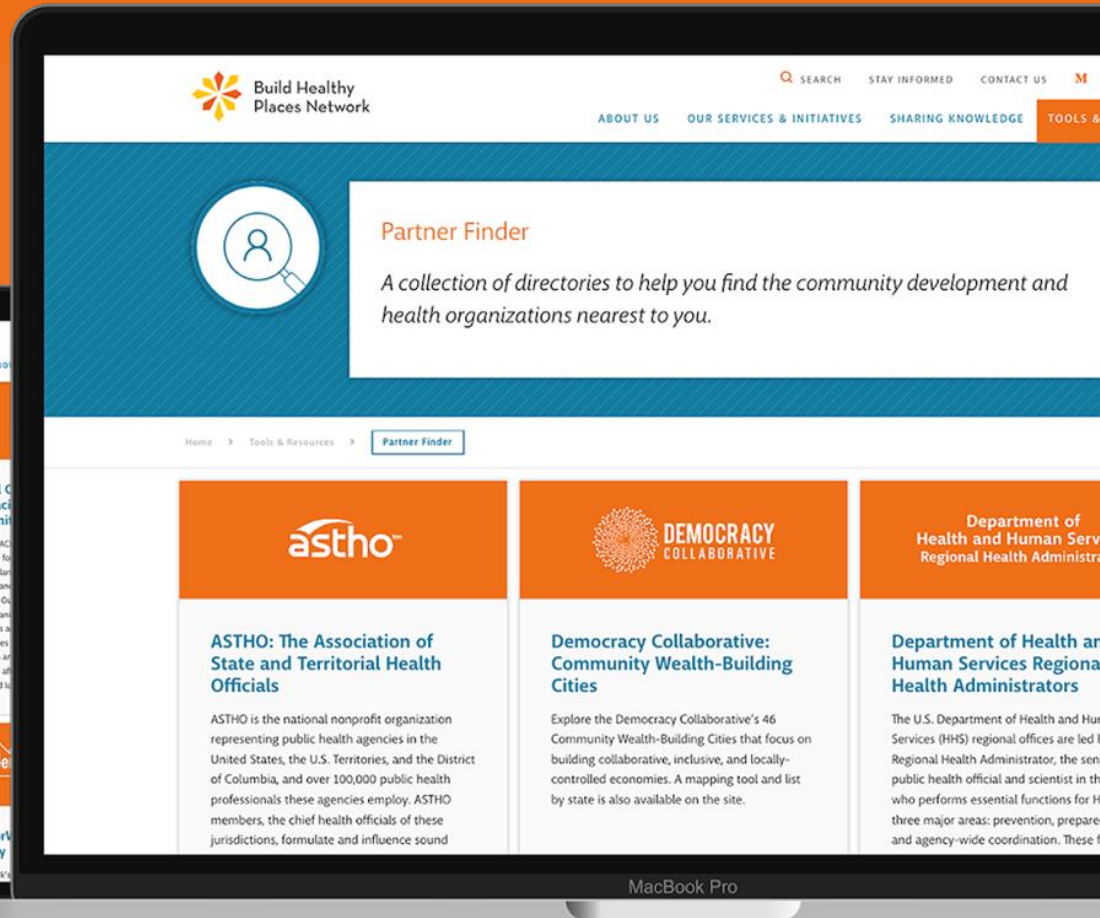
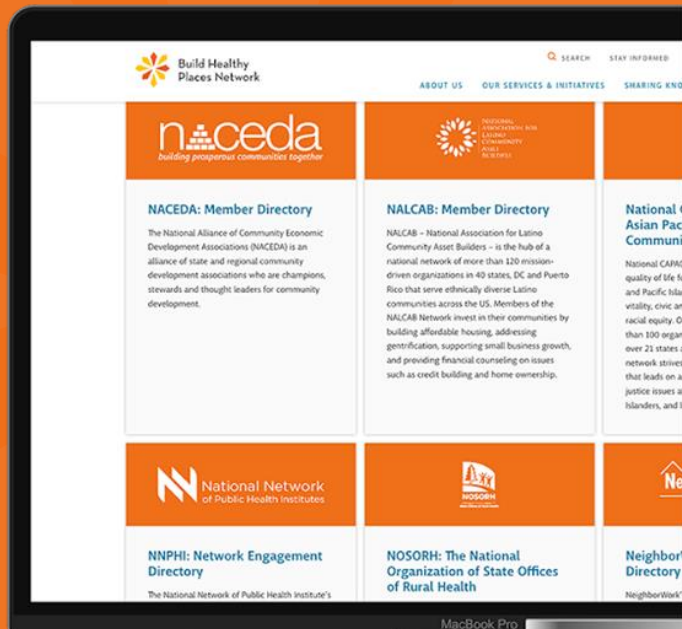


Community Close Ups





Partner Finder



Peer-reviewed Summary Article



ELSEVIER

Academic Pediatrics


Volume 21, Issue 8, Supplement, November–December 2021,

Pages S184-S193



Community Response to Poverty and Health Interventions

Neighborhood Poverty and Child Health: Investing in Communities to Improve Childhood Opportunity and Well-Being

Douglas P. Jutte MD, MPH ^{a, b}  , Renae A. Badruzzaman MPH ^{a, b}, Ruth Thomas-Squance PhD, MPH ^{a, b}



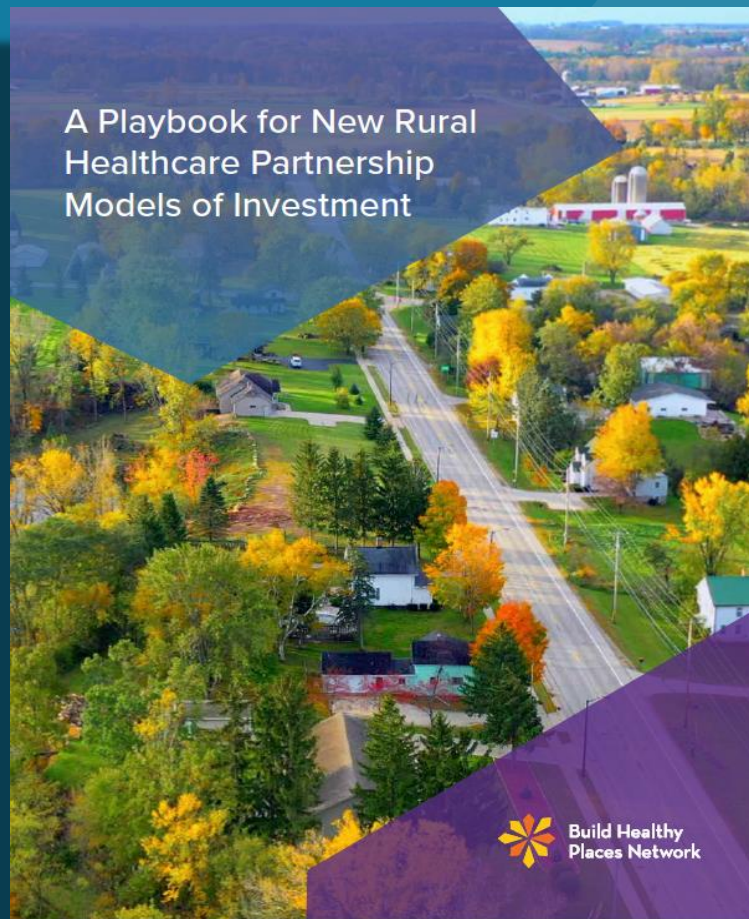
Partnerships for Health
Equity and Opportunity:
A Healthcare Playbook for Community Developers

Healthcare & Community Development Playbooks

Community Economic Development & Healthcare Playbook



Rural Healthcare & Community Development Playbook



Closing Comments





COMMUNITY DEVELOPMENT & HEALTH *TOGETHER*

TAKEAWAYS:

Working in the same places, often with same people

More effective interventions on neighborhood-level SDOH

Financial expertise and substantial resources of their own

Opportunity for healthcare to accelerate positive impact

“We are likely to look back at this time and wonder why community development and health were ever separate sectors.”

– Risa Lavizzo-Mourey, MD, then-President and CEO, Robert Wood Johnson Foundation
Speaking at the 2016 National Interagency Community Reinvestment Conference



 BuildHealthyPlaces.org

 @BHPNetwork

 [linkedin.com/company/
Build-Healthy-Places-Network](https://linkedin.com/company/Build-Healthy-Places-Network)

 djutte@buildhealthyplaces.org

info@buildhealthyplaces.org

